

# Biological Sharps Segregation and Disposal

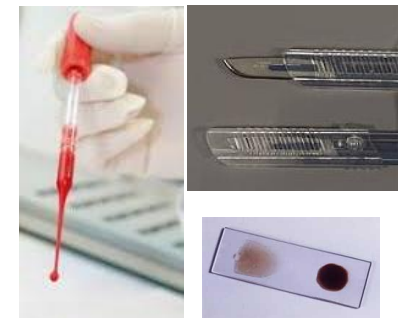
## Waste Category

## Examples

## Treatment/Disposal

## Container

### Sharps



Items sharp enough to puncture skin

- Needles
- Syringes with or w/o needles
- Empty syringes used with pharmaceuticals
- Lancets
- Scalpels
- I.V. Lines w needles

Items sharp enough to puncture skin and are **contaminated** with potentially infectious materials

- Pasteur Pipettes
- Slides
- Broken glassware

**SHARPS**

Sharps containers must be permanently closed and disposed of through the EHS when they are:

- 3/4 full, or
- Within 90 days of first use.

Date of first use: \_\_\_\_\_

Date of disposal: \_\_\_\_\_  
(i.e. "date of first use" + 90 days)

Room#/Building: \_\_\_\_\_

Tag completed by: \_\_\_\_\_

**NOTE:** If sharps contain chemical agents, attach **Hazardous Waste Pickup Tag**.

For disposal, place a Hazardous Waste Pickup Request at the Department Environmental Health and Safety website.  
[www.ehs.msu.edu](http://www.ehs.msu.edu) • TEL: 355-0153

Collect and store in approved sharps containers (can be purchased at University Stores).

- Affix label with month/date/year upon first use
- Submit for EHS Waste Pickup when  $\frac{3}{4}$  full or within 90 days of first use
- Vet clinic ,follow your site specific disposal protocols

