

Beef Cattle Research Center Photo Log



HA #1 – Non asbestos containing domestic water supply pipe straight insulation (fiberglass) wrap

For more information contact MSU Environmental Health and Safety – (517) 353-8956



HA #2 – Asbestos containing domestic water supply pipe joint and hanger insulation

For more information contact MSU Environmental Health and Safety – (517) 353-8956

Beef Cattle Research Center Photo Log



HA #3 – Non asbestos containing steam/condensate pipe straight insulation (fiberglass) wrap

For more information contact MSU Environmental Health and Safety – (517) 353-8956

Beef Cattle Research Center Photo Log

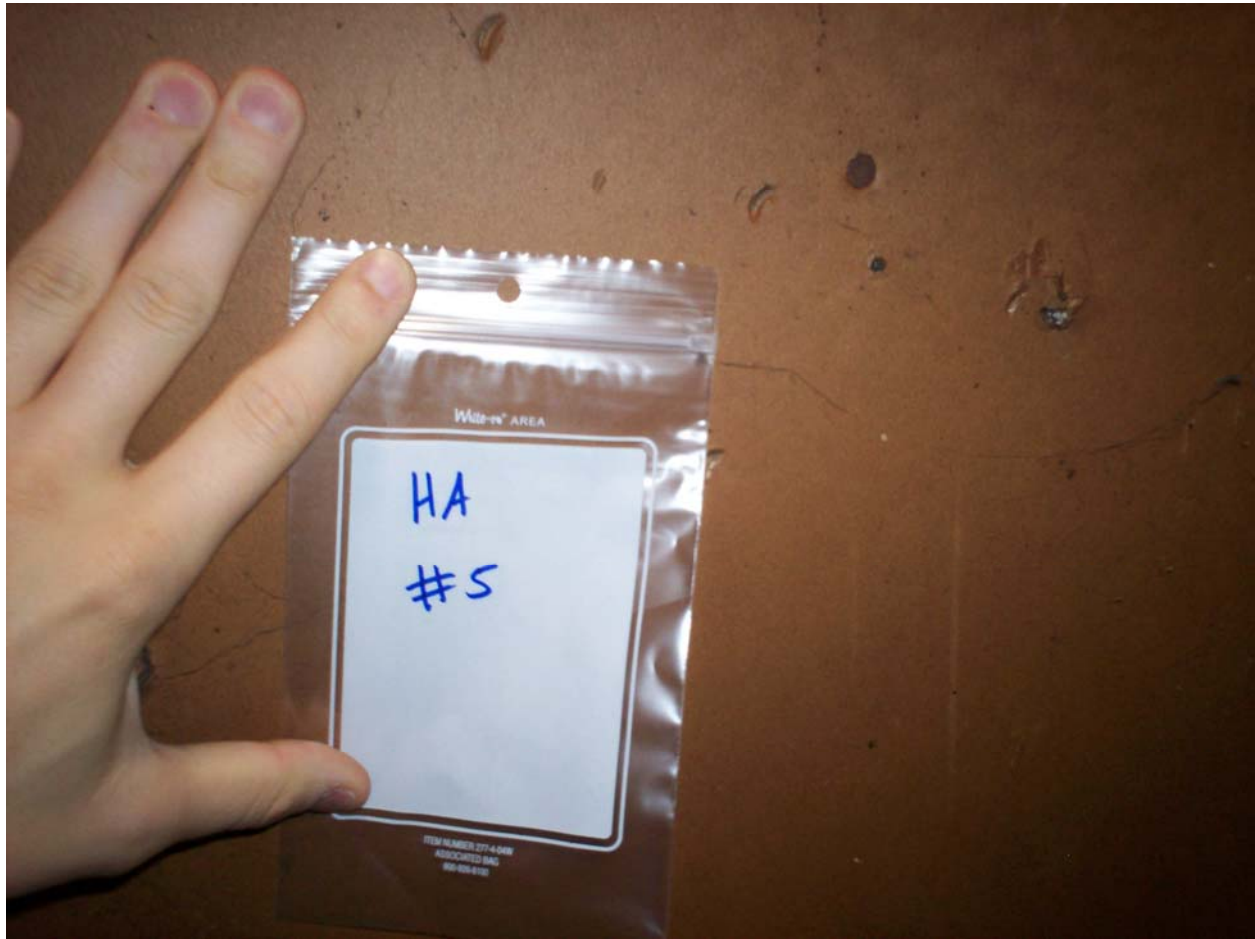


HA #4 – Asbestos containing steam/condensate pipe joint and hanger insulation

For more information contact MSU Environmental Health and Safety – (517) 353-8956



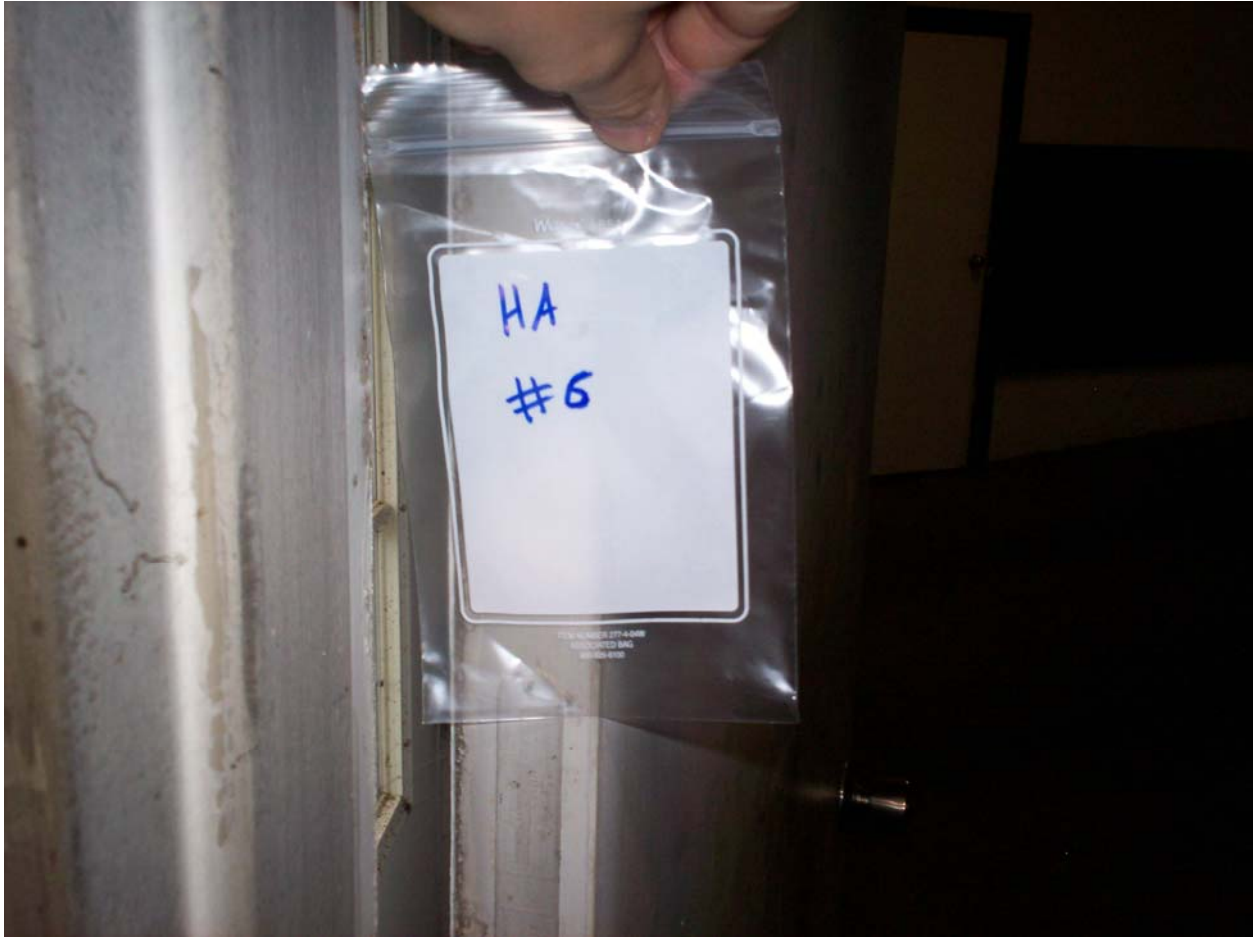
Beef Cattle Research Center Photo Log



HA #5 – Non asbestos containing drywall

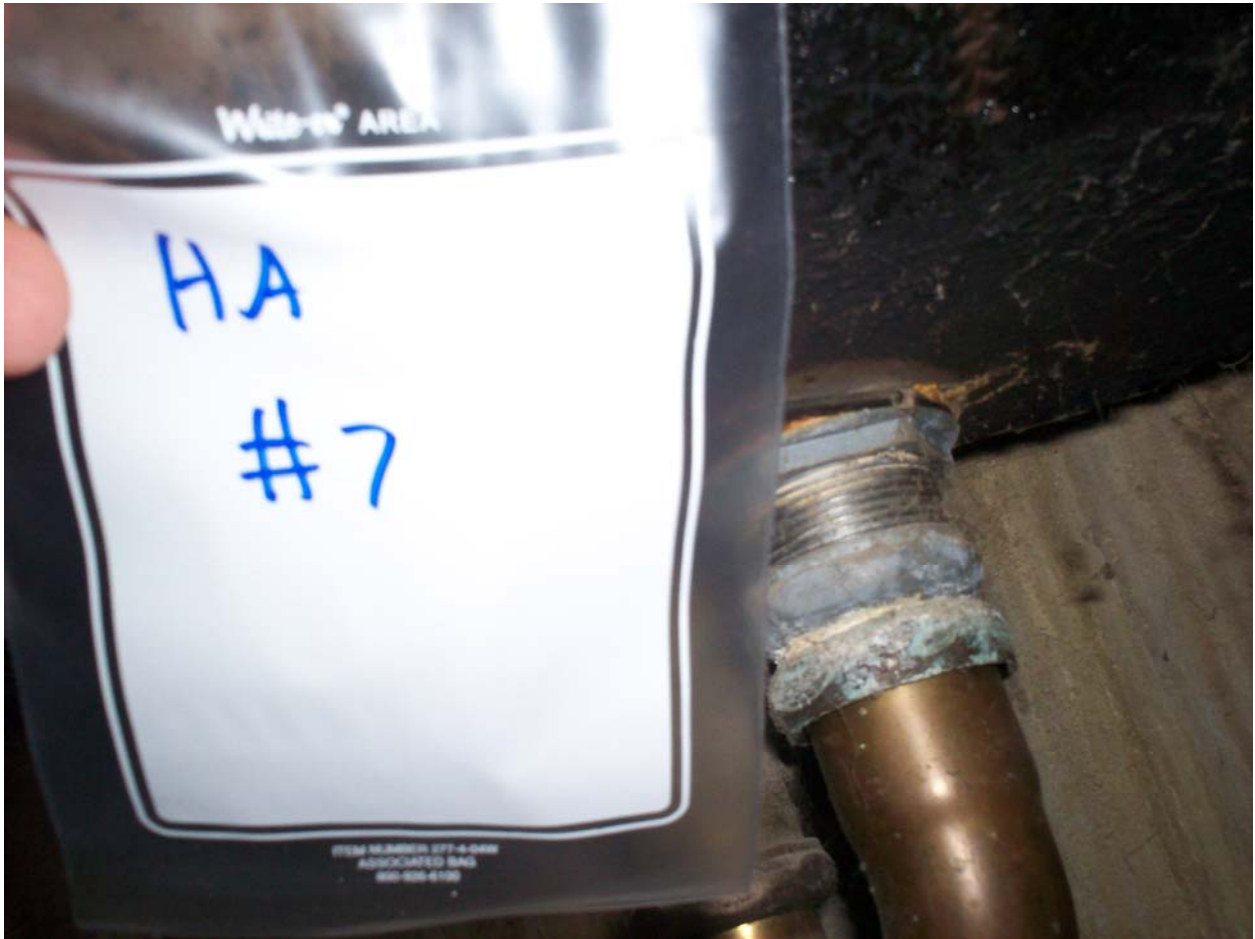
For more information contact MSU Environmental Health and Safety – (517) 353-8956

Beef Cattle Research Center Photo Log



HA #6 – Assumed asbestos containing fire door and frame

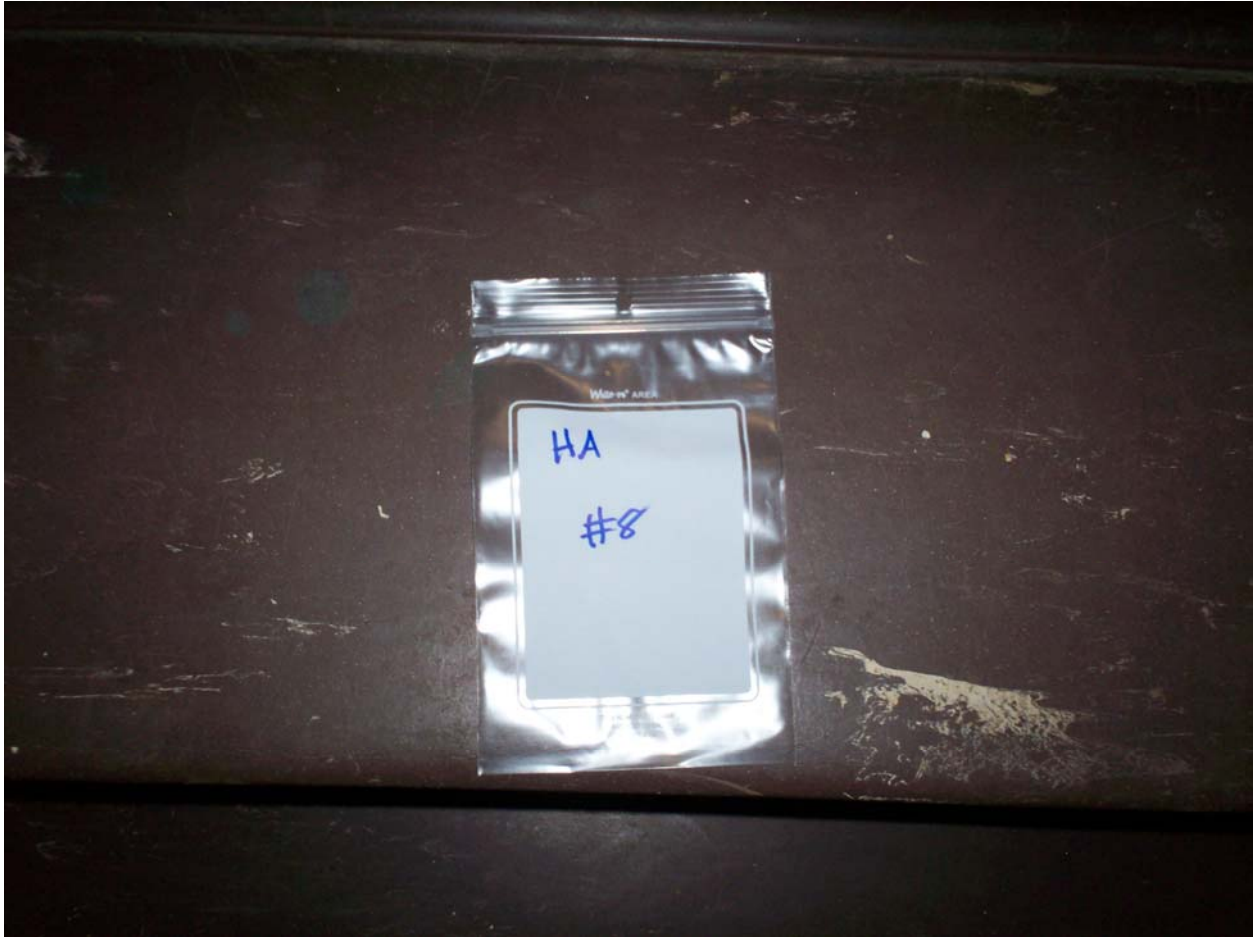
For more information contact MSU Environmental Health and Safety – (517) 353-8956



HA #7 – Asbestos containing black sink undercoating

For more information contact MSU Environmental Health and Safety – (517) 353-8956

Beef Cattle Research Center Photo Log



HA #8 – Assumed asbestos containing brown stair tread with white streaks and associated mastic

For more information contact MSU Environmental Health and Safety – (517) 353-8956



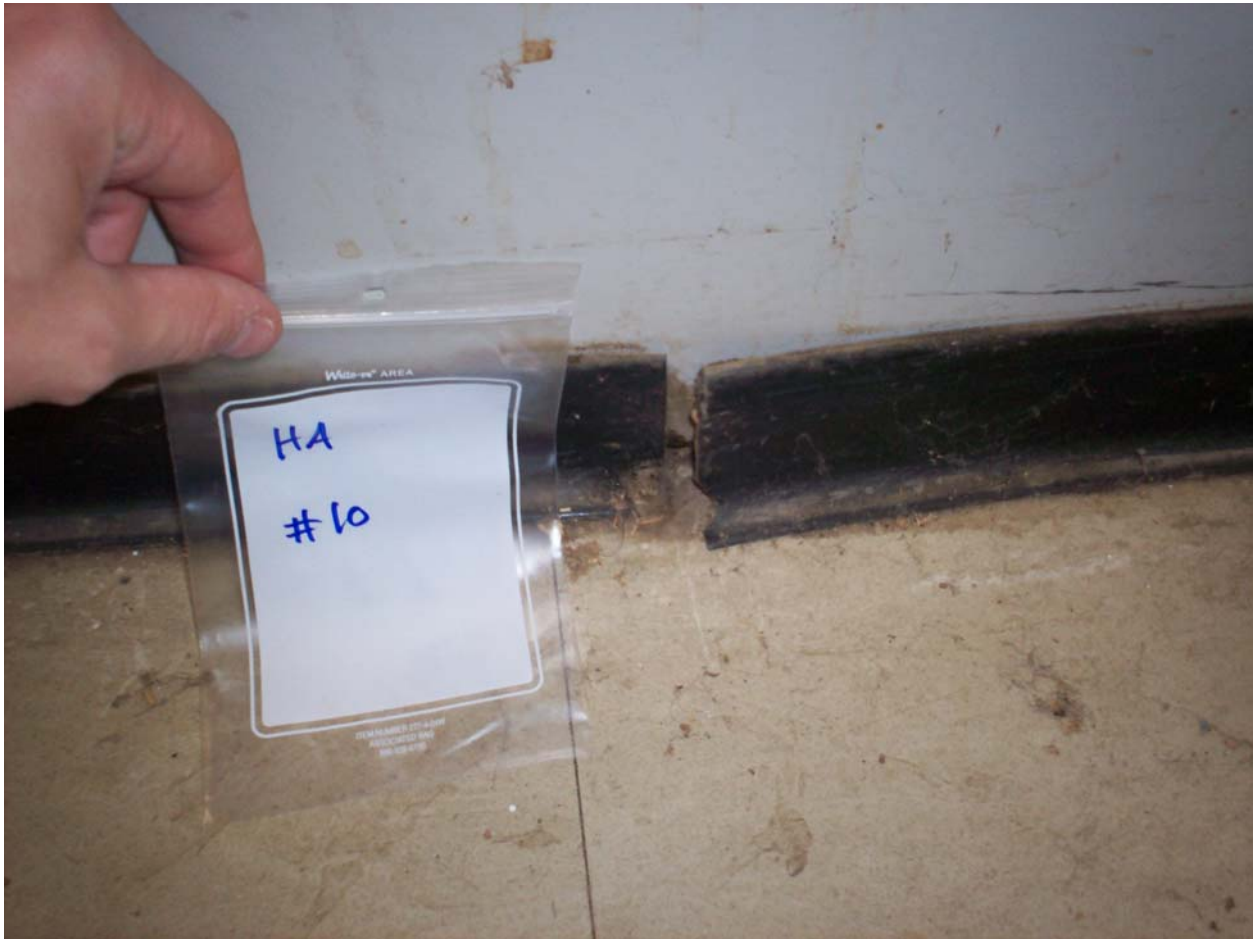
Beef Cattle Research Center Photo Log



HA #9 – Asbestos containing 9” x 9” cream floor tile with white and brown streaks and associated non asbestos containing mastic

For more information contact MSU Environmental Health and Safety – (517) 353-8956

Beef Cattle Research Center Photo Log



HA #10 – Non asbestos containing 3” black cove molding and associated mastic

For more information contact MSU Environmental Health and Safety – (517) 353-8956

Beef Cattle Research Center Photo Log



HA #11 – Non asbestos containing 4” green cove molding and associated mastic

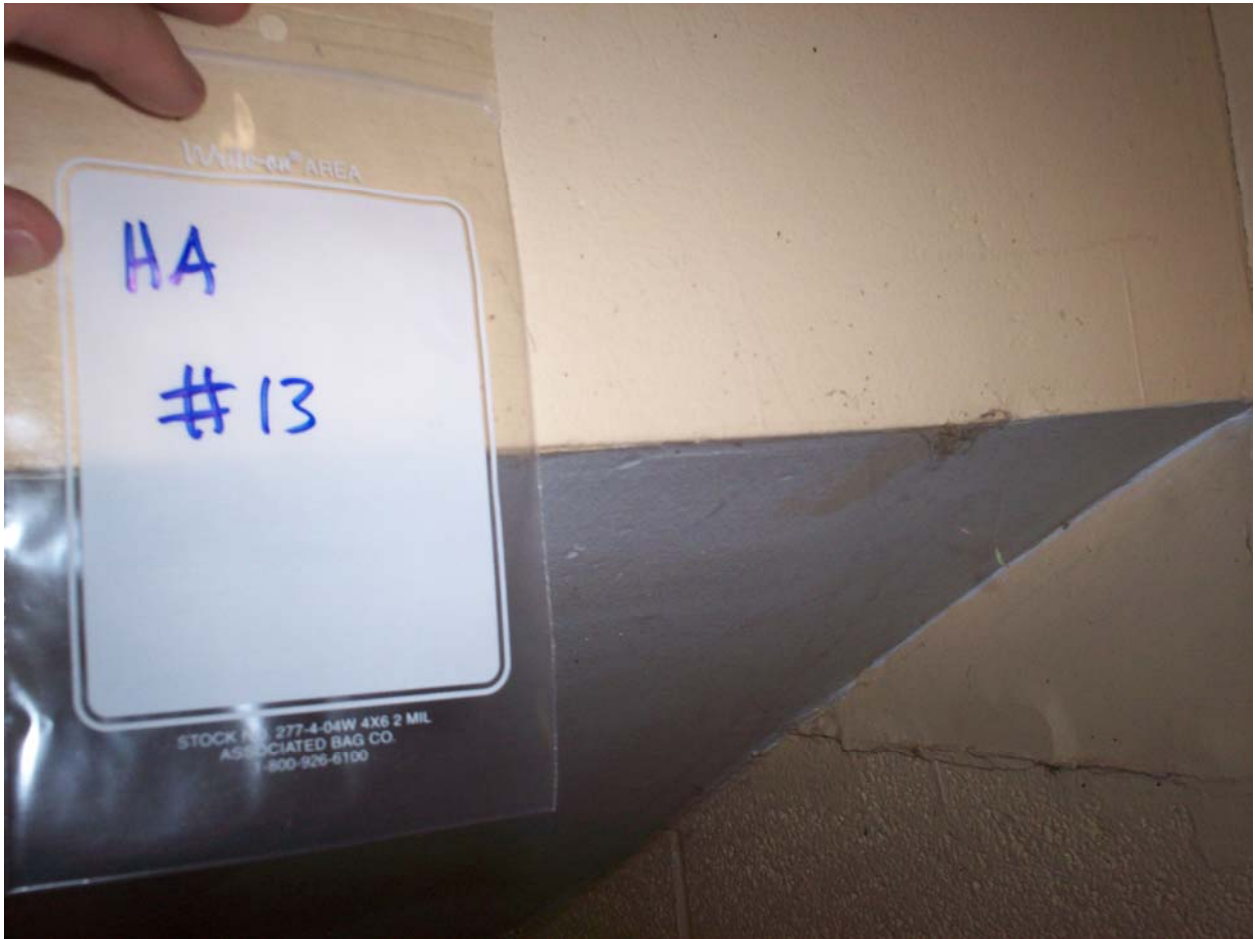
For more information contact MSU Environmental Health and Safety – (517) 353-8956

Beef Cattle Research Center Photo Log



HA #12 – Asbestos containing 9” x 9” green floor tile with white streaks and associated non asbestos containing mastic

For more information contact MSU Environmental Health and Safety – (517) 353-8956



HA #13 – Asbestos containing drywall joint compound

For more information contact MSU Environmental Health and Safety – (517) 353-8956

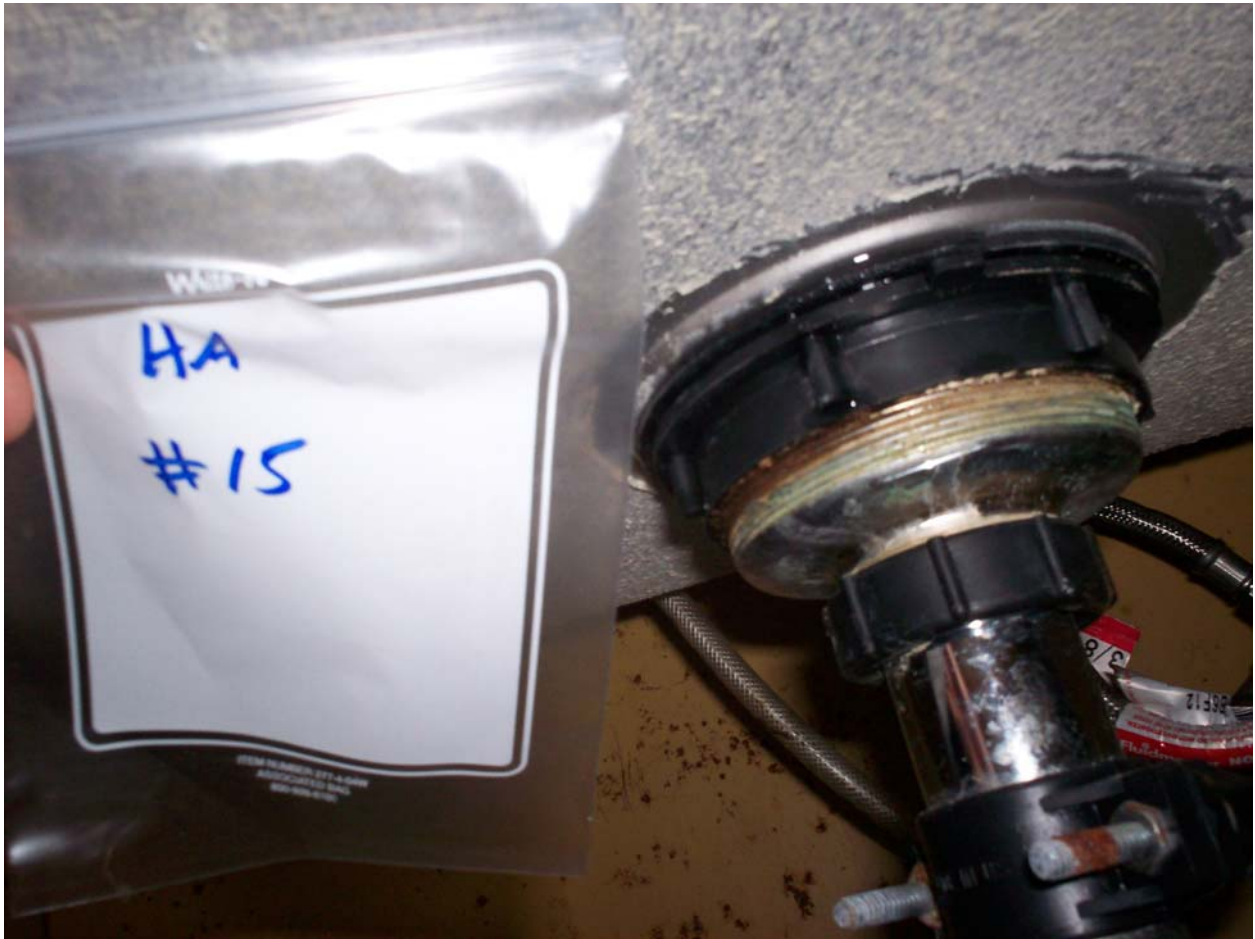


Beef Cattle Research Center Photo Log



HA #14 – Non asbestos containing 4” tan cove molding and associated mastic

For more information contact MSU Environmental Health and Safety – (517) 353-8956



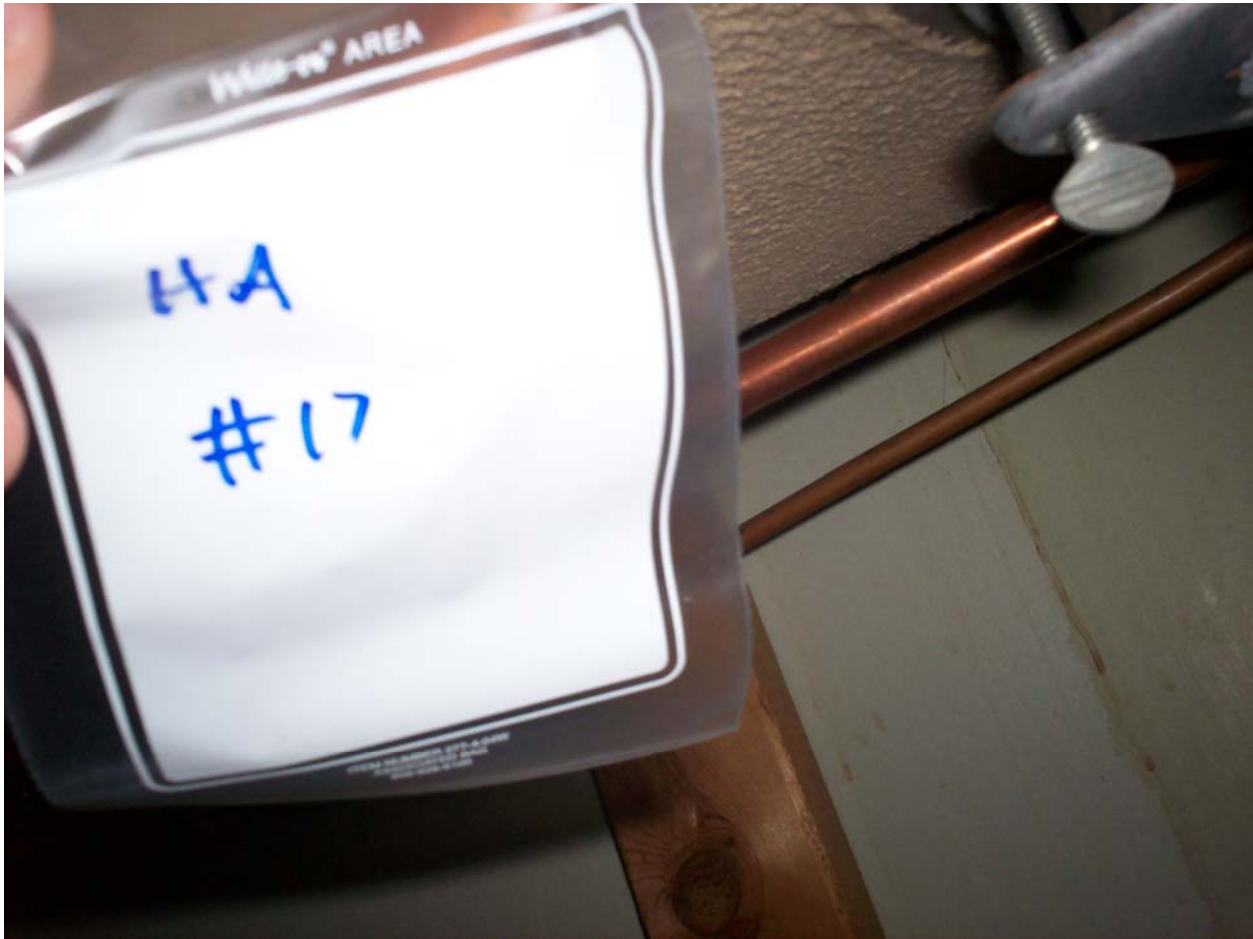
HA #15 – Non asbestos containing white sink undercoating

For more information contact MSU Environmental Health and Safety – (517) 353-8956



HA #16 – Asbestos containing wallboard glue pods

For more information contact MSU Environmental Health and Safety – (517) 353-8956



HA #17 – Asbestos containing tan sink undercoating

For more information contact MSU Environmental Health and Safety – (517) 353-8956