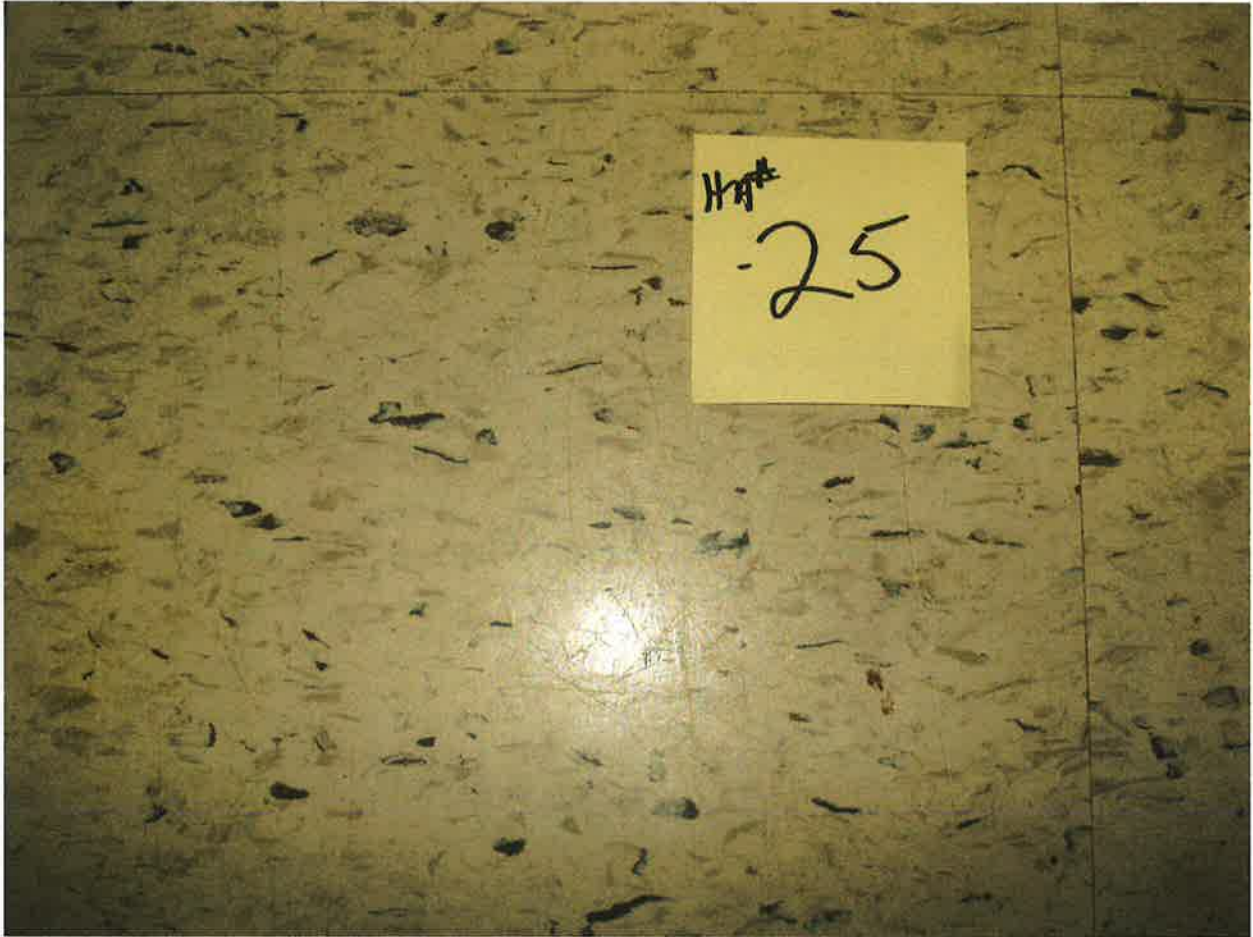


MSU Case Hall  
East Lansing, Michigan



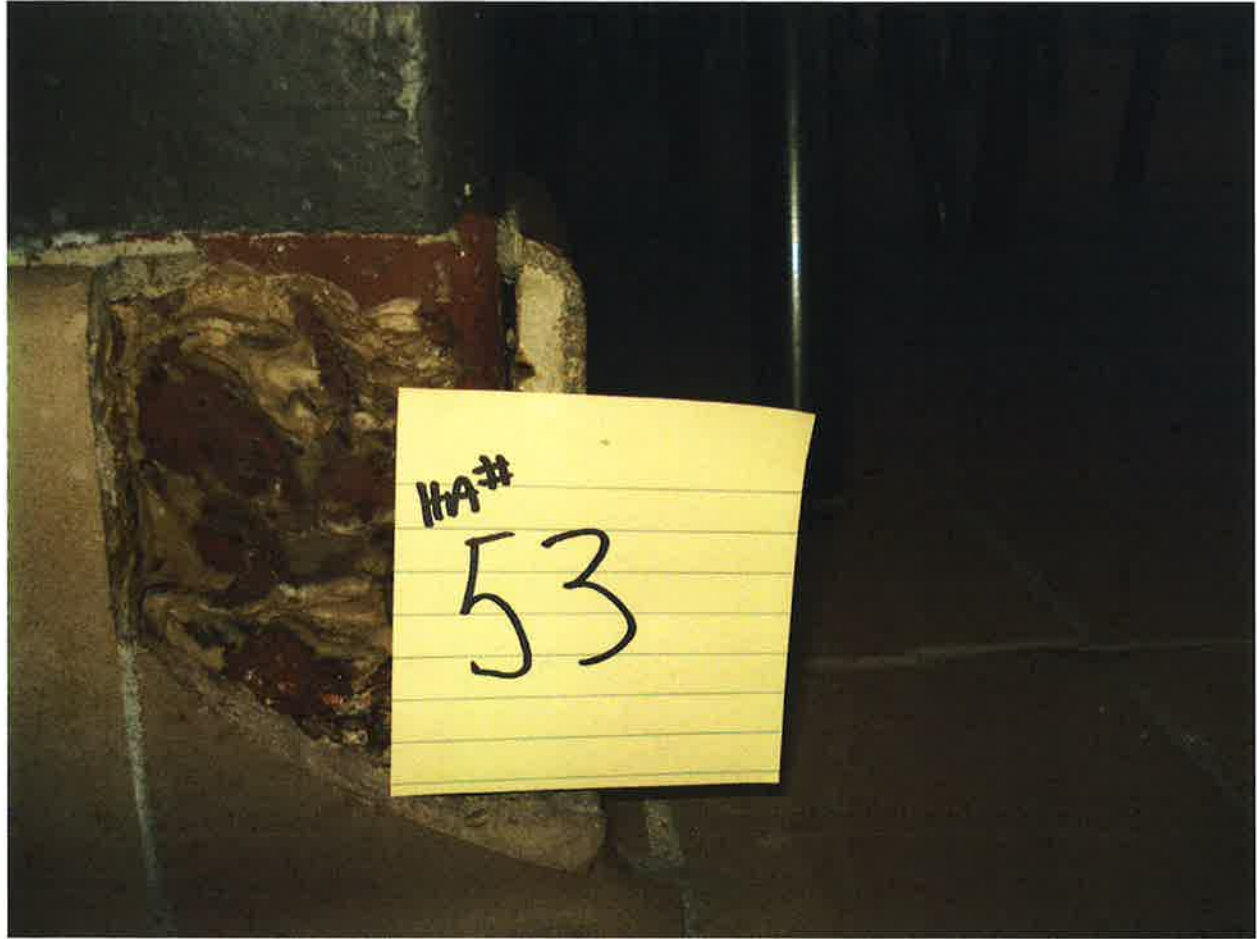
HA #17 – Non asbestos containing troweled on material (tan)  
(Room 31 and 42)



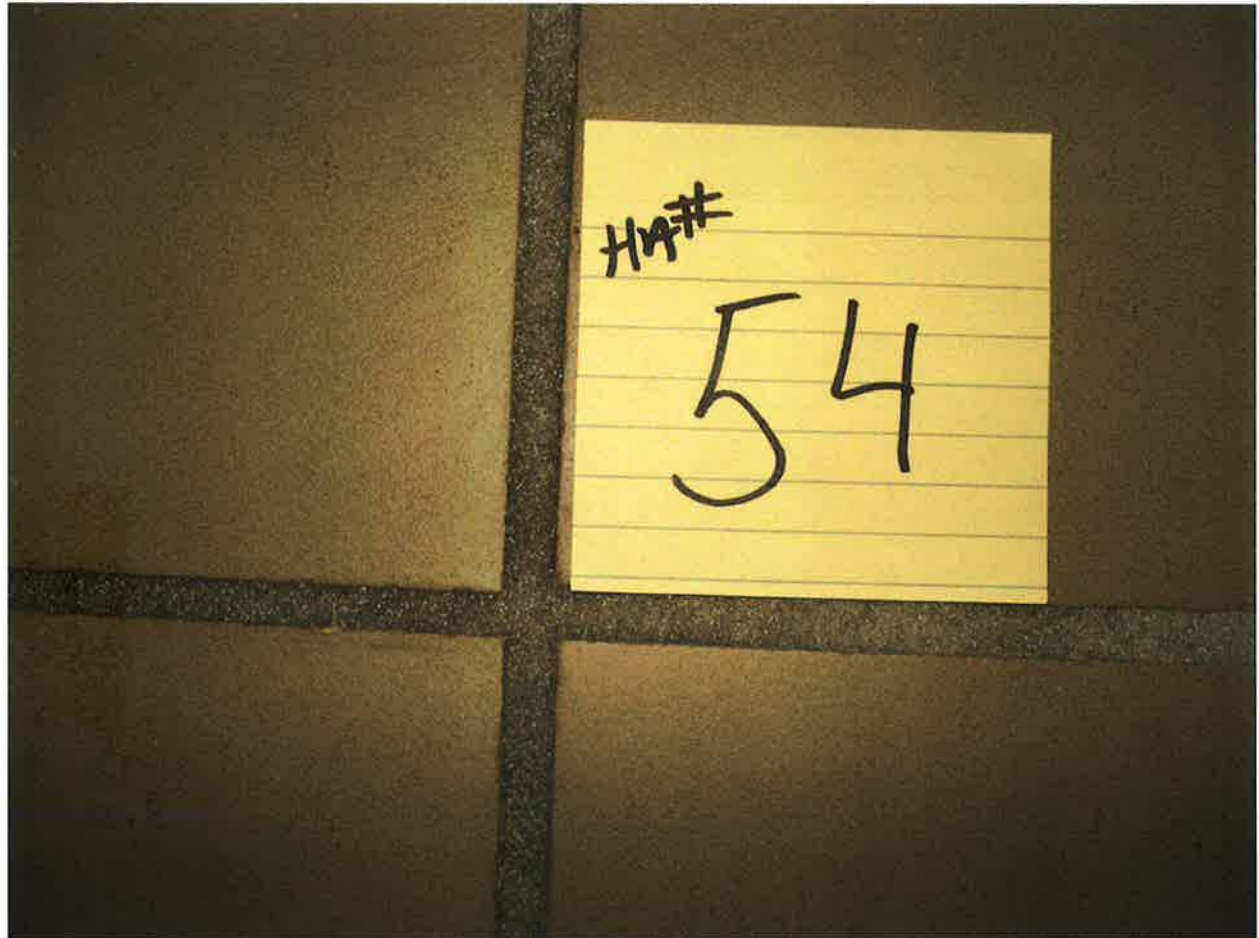
HA #25 – Non asbestos containing 12” x 12” white floor tile  
with black and gray specks and associated mastic



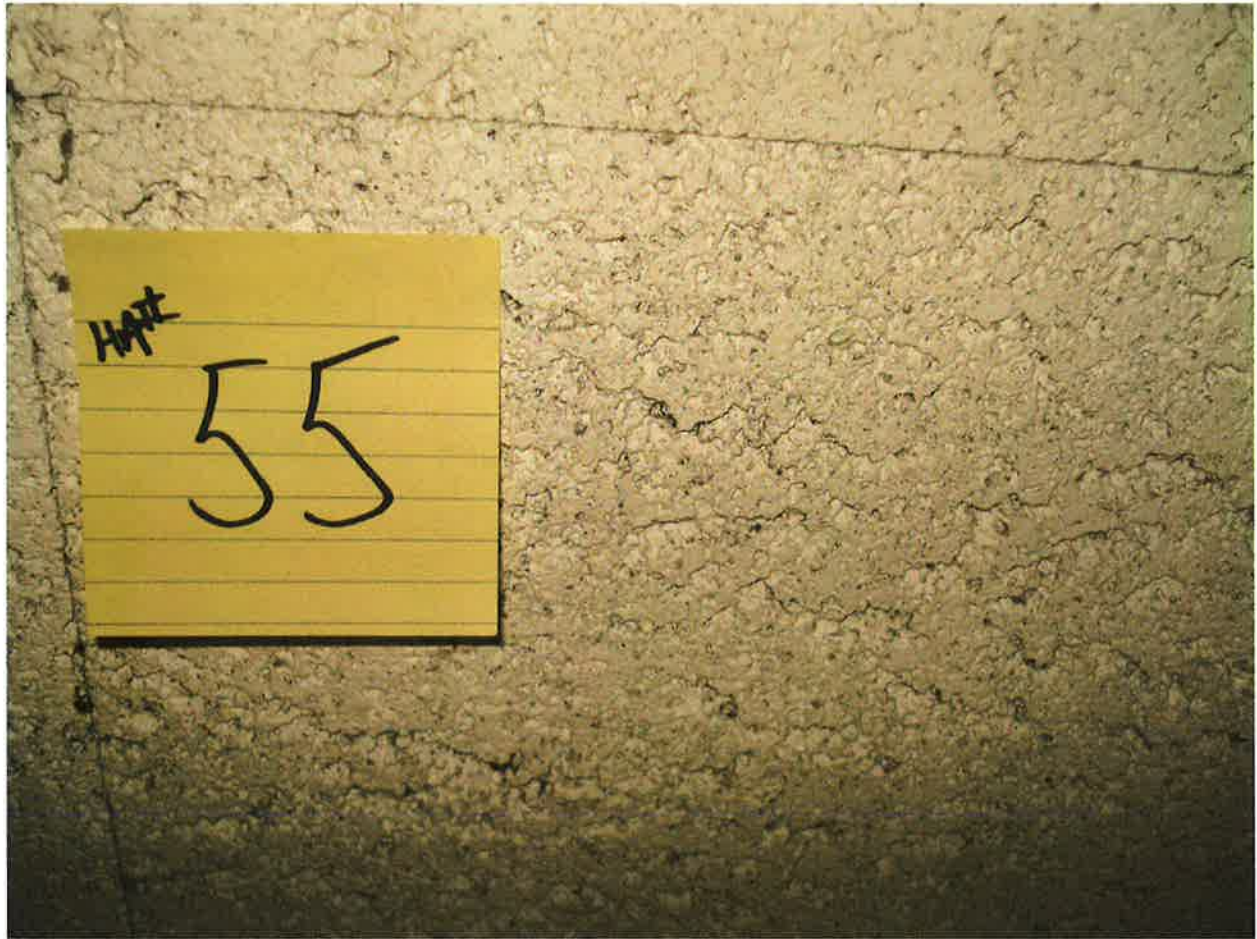
HA #34 – Non asbestos containing gray window and door frame caulk compound



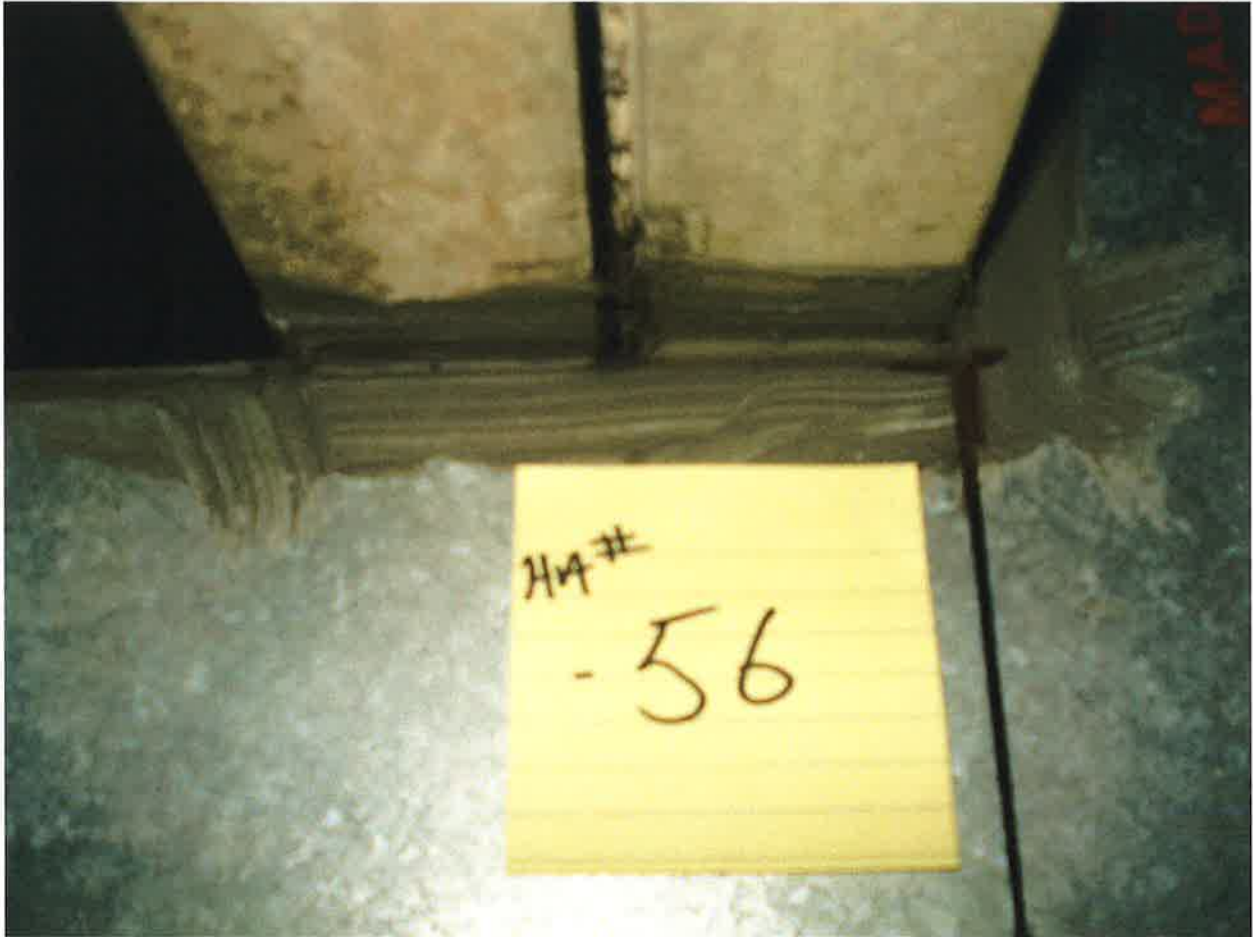
HA #53 – Non asbestos containing ceramic tile  
bedding compound associated with 6" x 6" tan ceramic floor tile



HA #54 – Non asbestos containing ceramic tile grout compound  
associated with 6" x 6" tan ceramic floor tile



HA #55 – Non asbestos containing white spline  
ceiling tile with fissures



HA #56 – Non asbestos containing gray duct caulk compound





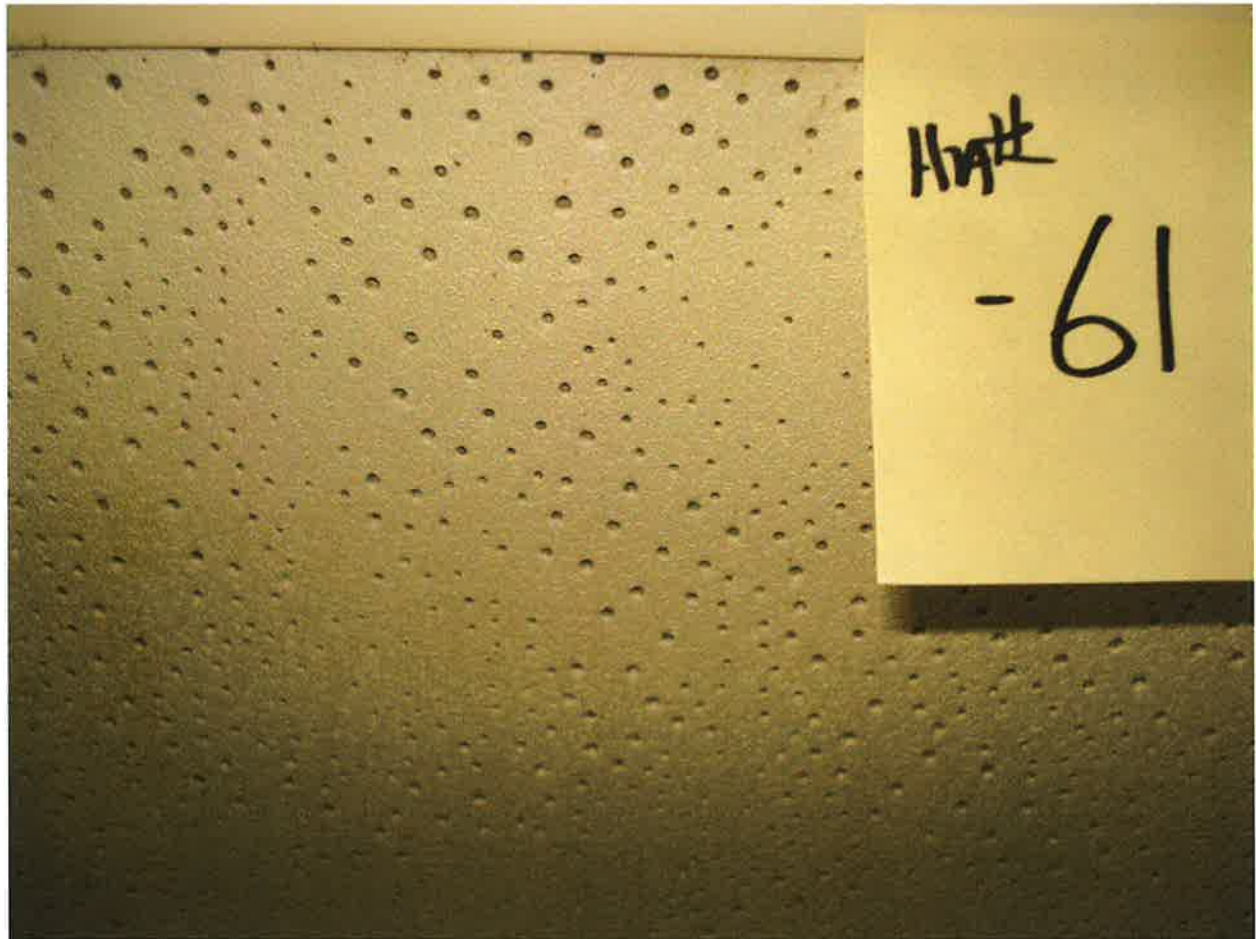
HA #57 – Non asbestos containing heavy textured wall plaster



HA #58 – Non asbestos containing drywall joint compound



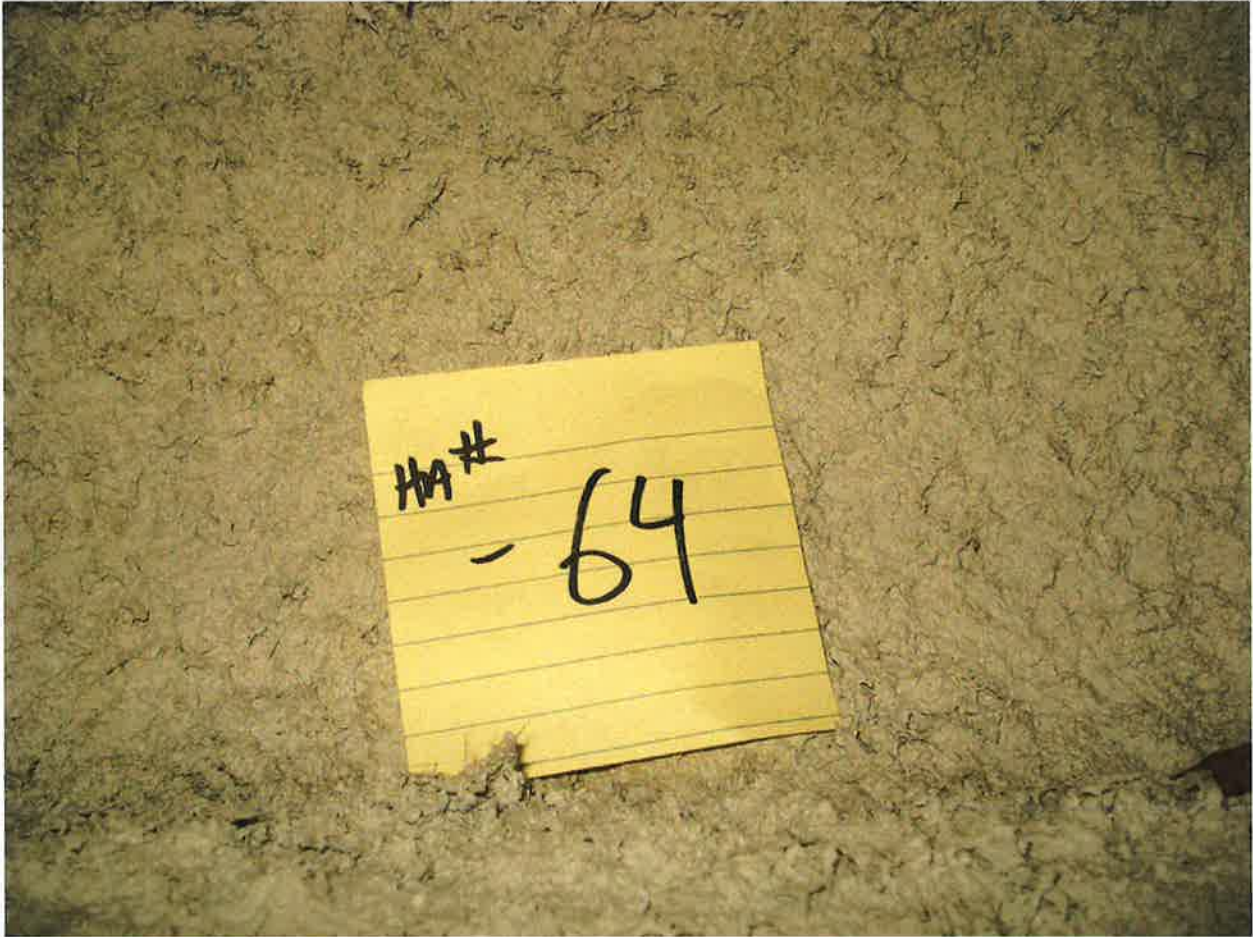
HA #59 – Non asbestos containing 2' x 2' white lay-in ceiling tile with pin holes and random gouge pattern



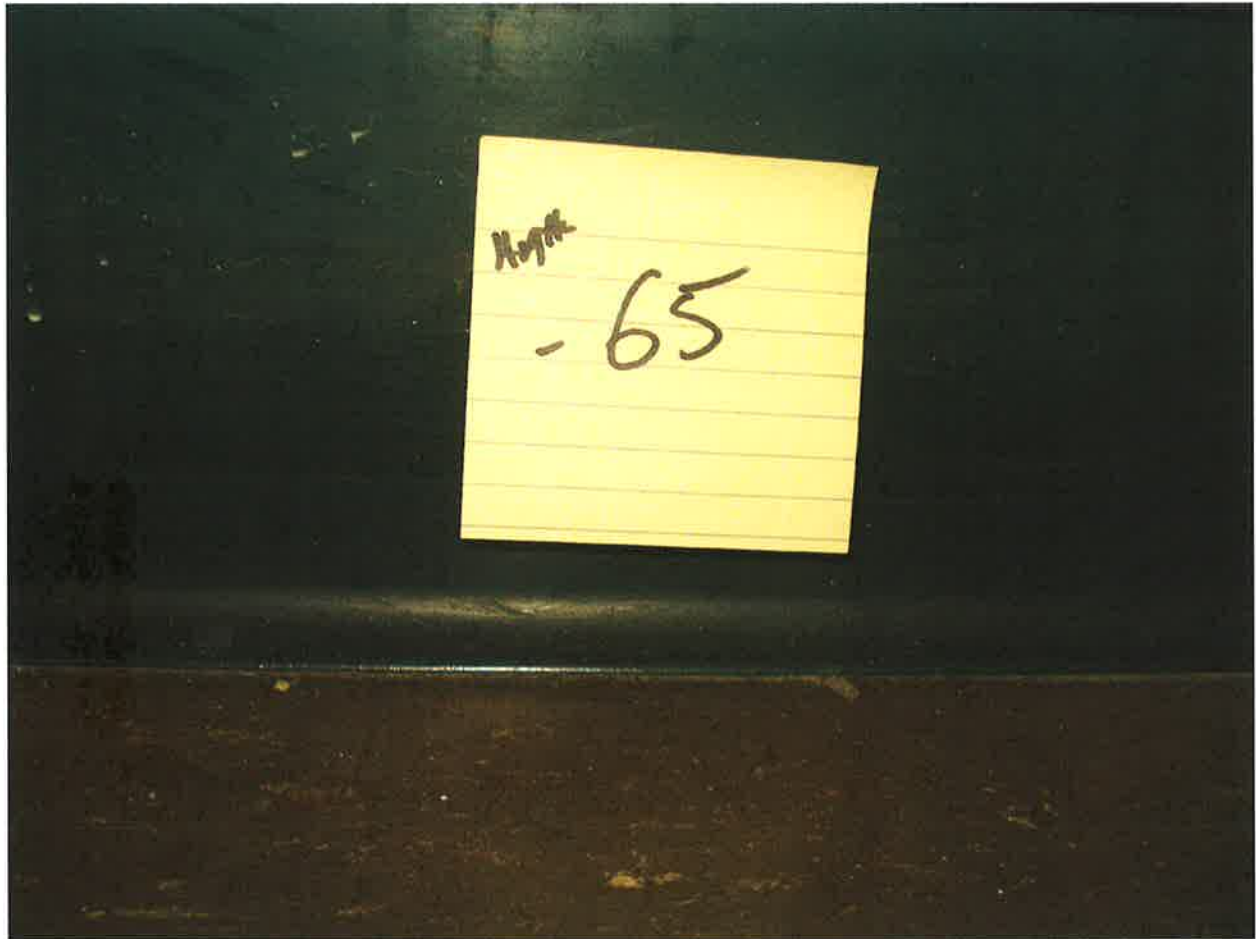
HA #61 – Non asbestos containing 2' x 2' white lay-in ceiling tile with random pin holes



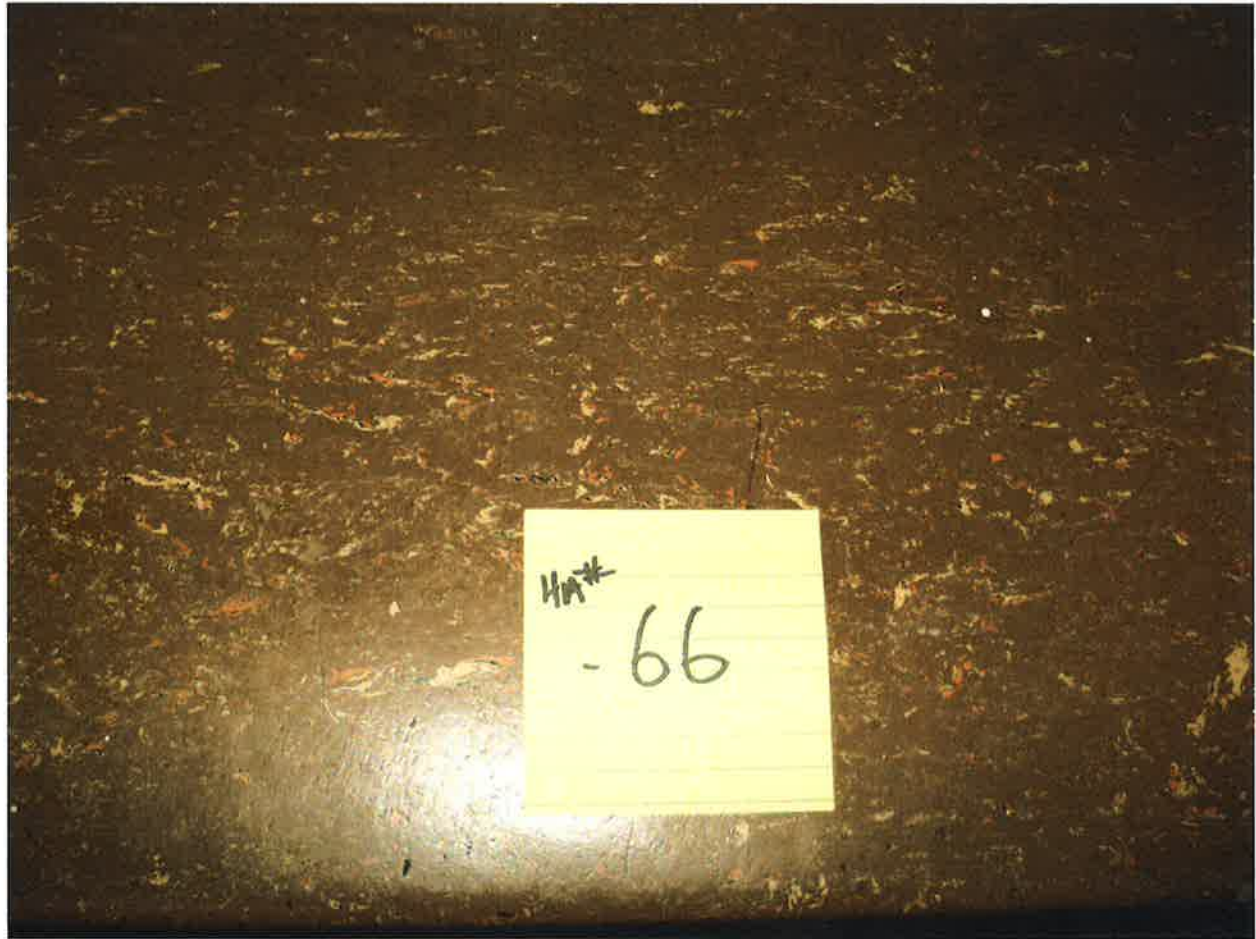
HA #63 – Non asbestos containing hot heating water supply pipe joint and hanger insulation



HA #64 – Non asbestos containing gray spray  
applied fireproofing



HA #65 – Non asbestos containing 6” black  
baseboard and associated mastic



HA #66 – Non asbestos containing brown stair tread  
with pink and yellow streaks (<1% Chrysotile) and non asbestos containing  
associated mastic





HA #67 – Non asbestos containing 2' x 4' white lay-in ceiling tile  
with pin holes and fissures



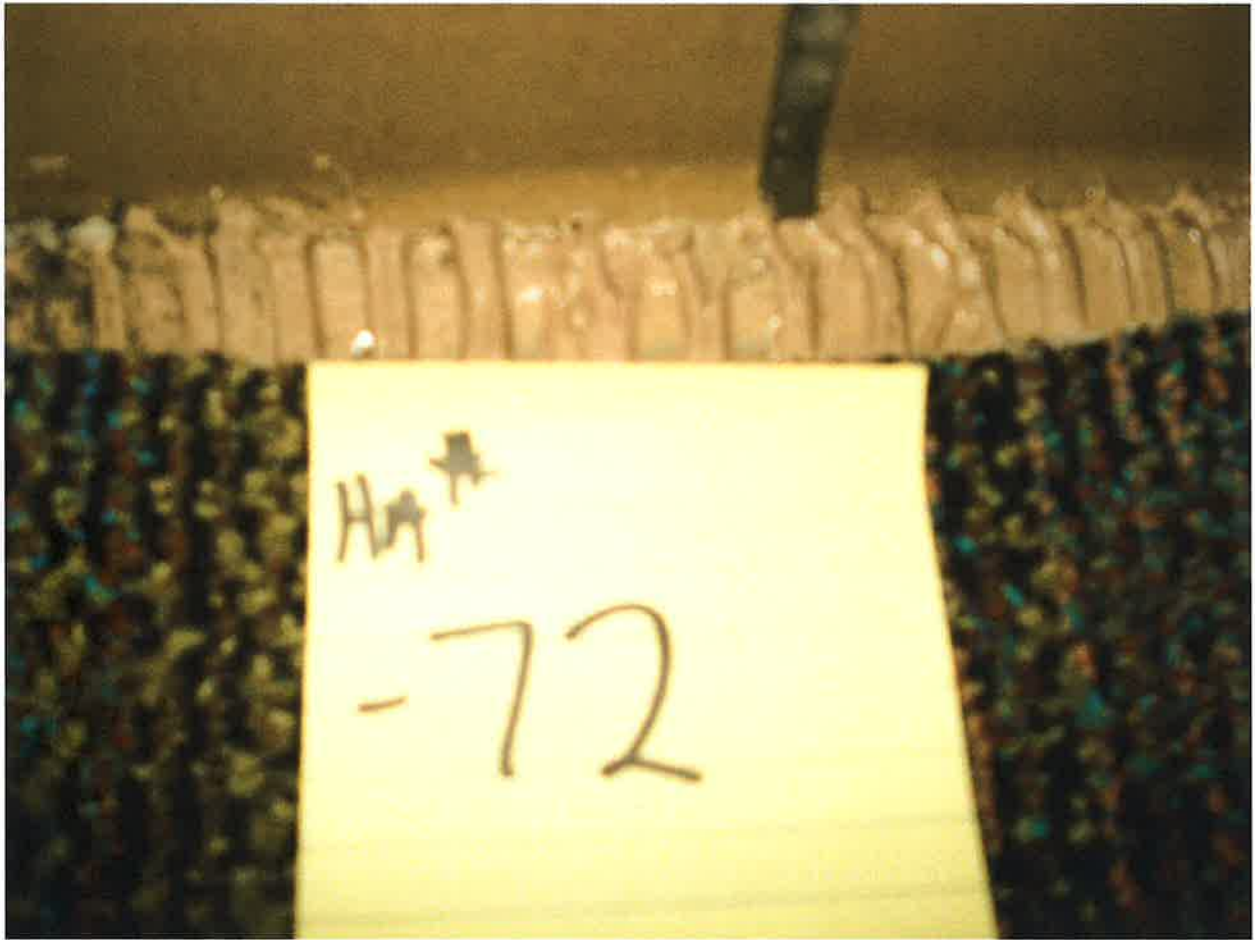
HA #68 – Non asbestos containing 4” x 4” ceramic wall tile  
bedding compound (<1% Chrysotile)



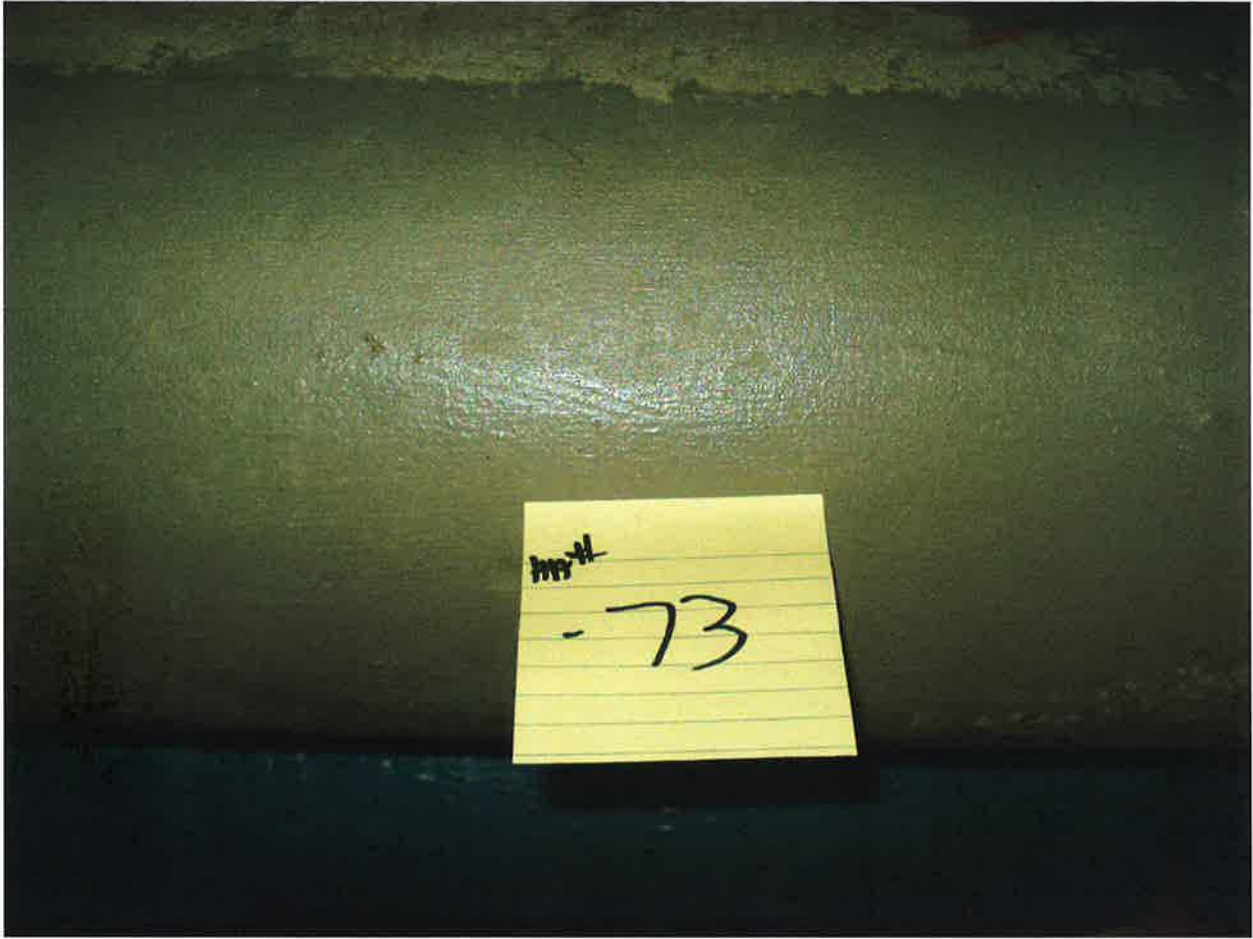
HA #70 – Asbestos containing drain line  
pipe joint and hanger insulation



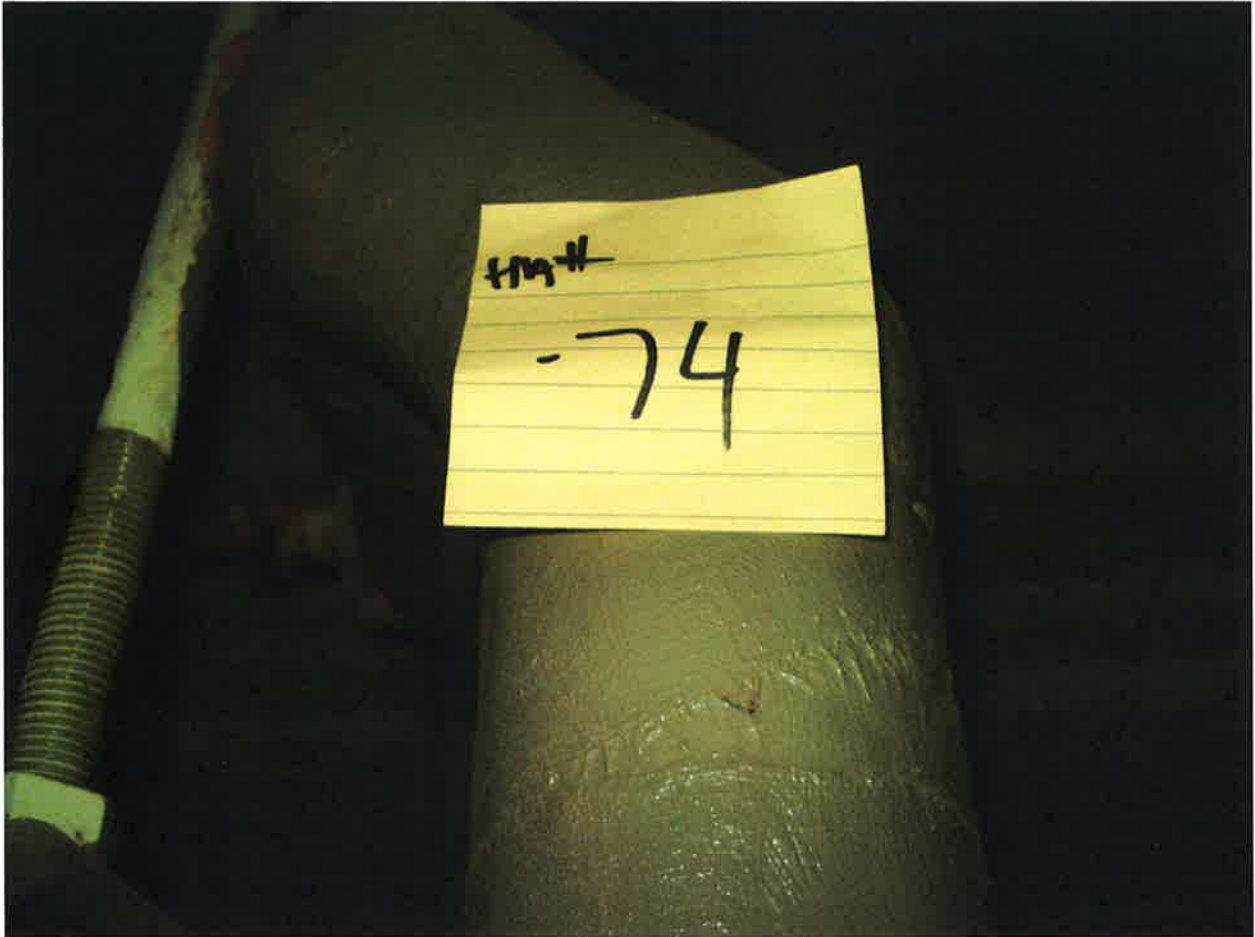
HA #71 – Non asbestos containing 4” tan  
baseboard and associated mastic



HA #72 – Non asbestos containing tan carpet mastic



HA #73 – Asbestos containing steam and condensate supply and return pipe straight insulation (mag insulation)

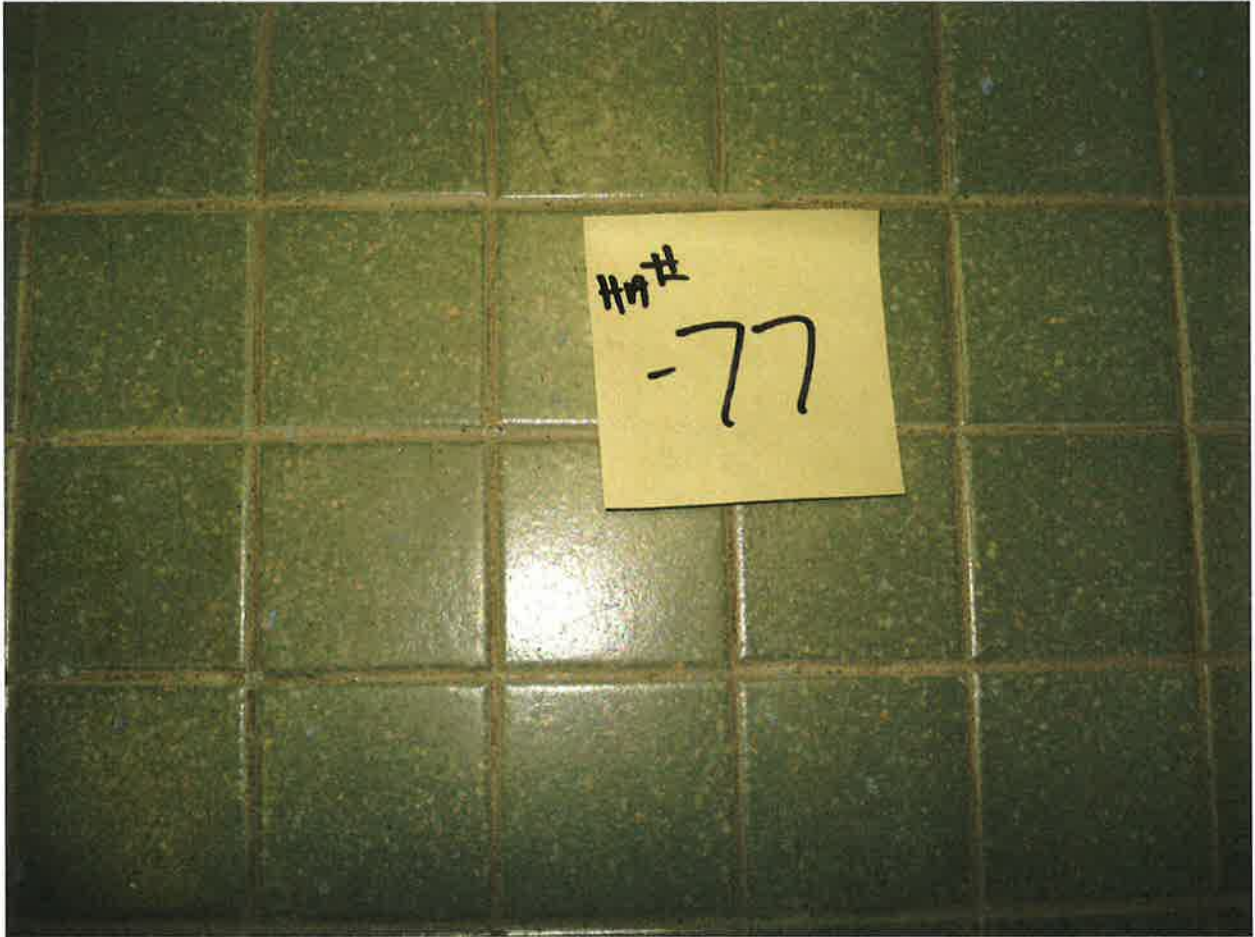


HA #74 – Non asbestos containing steam and condensate  
supply return pipe joint and hanger insulation

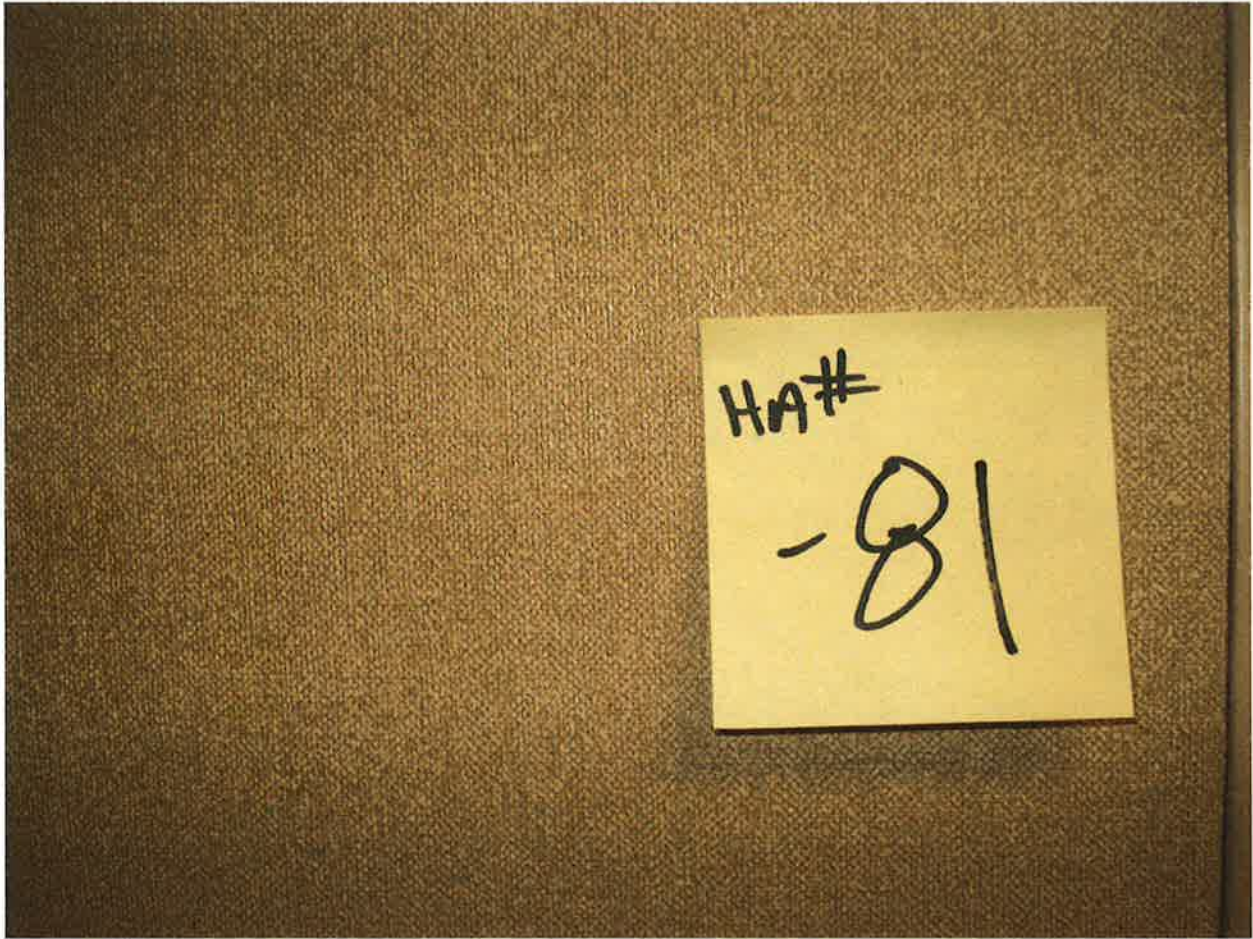


HA #75 – Non asbestos containing 12” x 12” tan ceramic  
floor tile bedding compound





HA #77 – Non asbestos containing 2” x 2” ceramic floor tile bedding compound



HA #81 – Non asbestos containing mauve wallpaper  
and associated glue



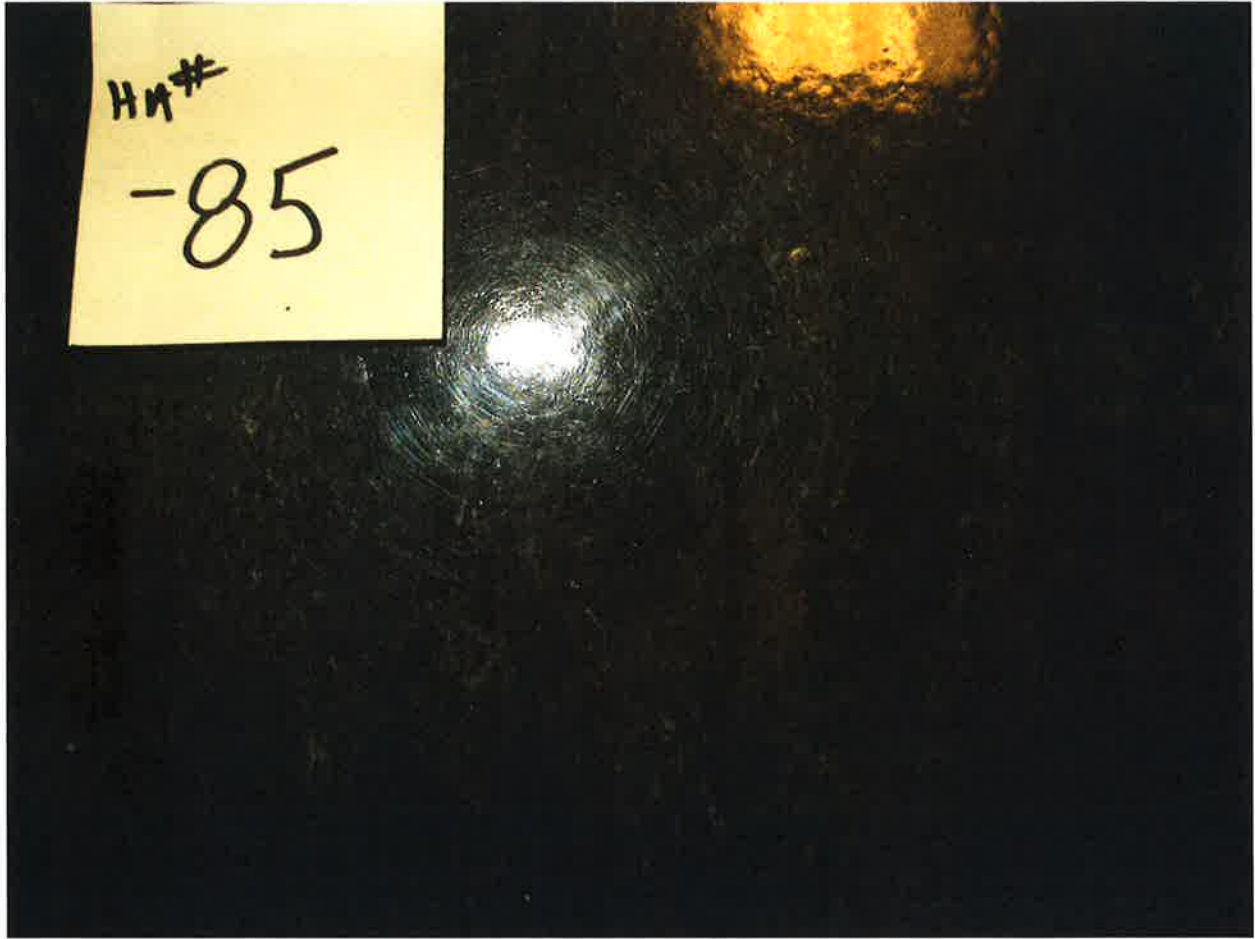
HA #82 – Non asbestos containing 12” x 12” white ceiling tile  
with deep texture and associated glue pods



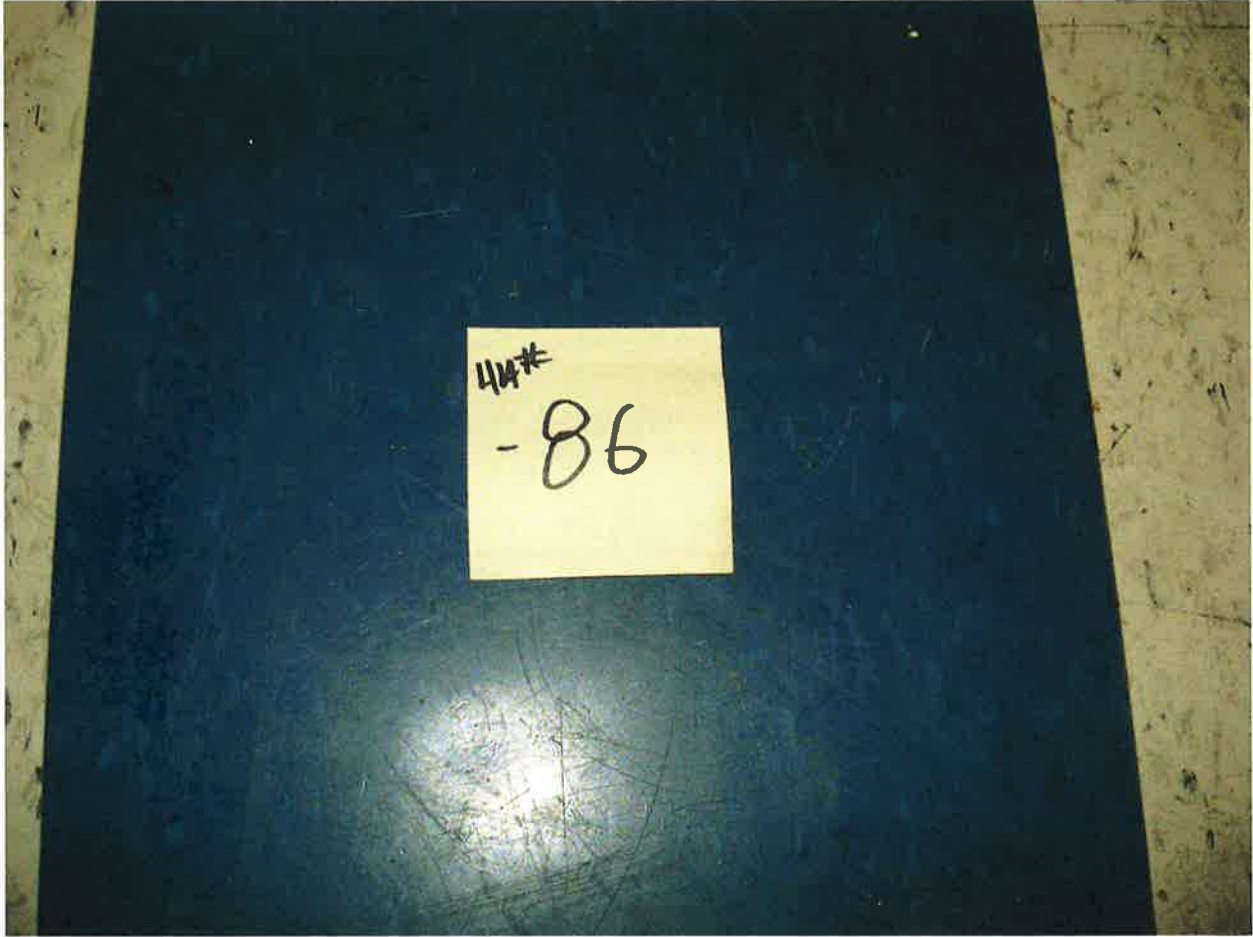
HA #83 – Non asbestos containing 2' x 2' white drop-in ceiling tile  
with deep texture



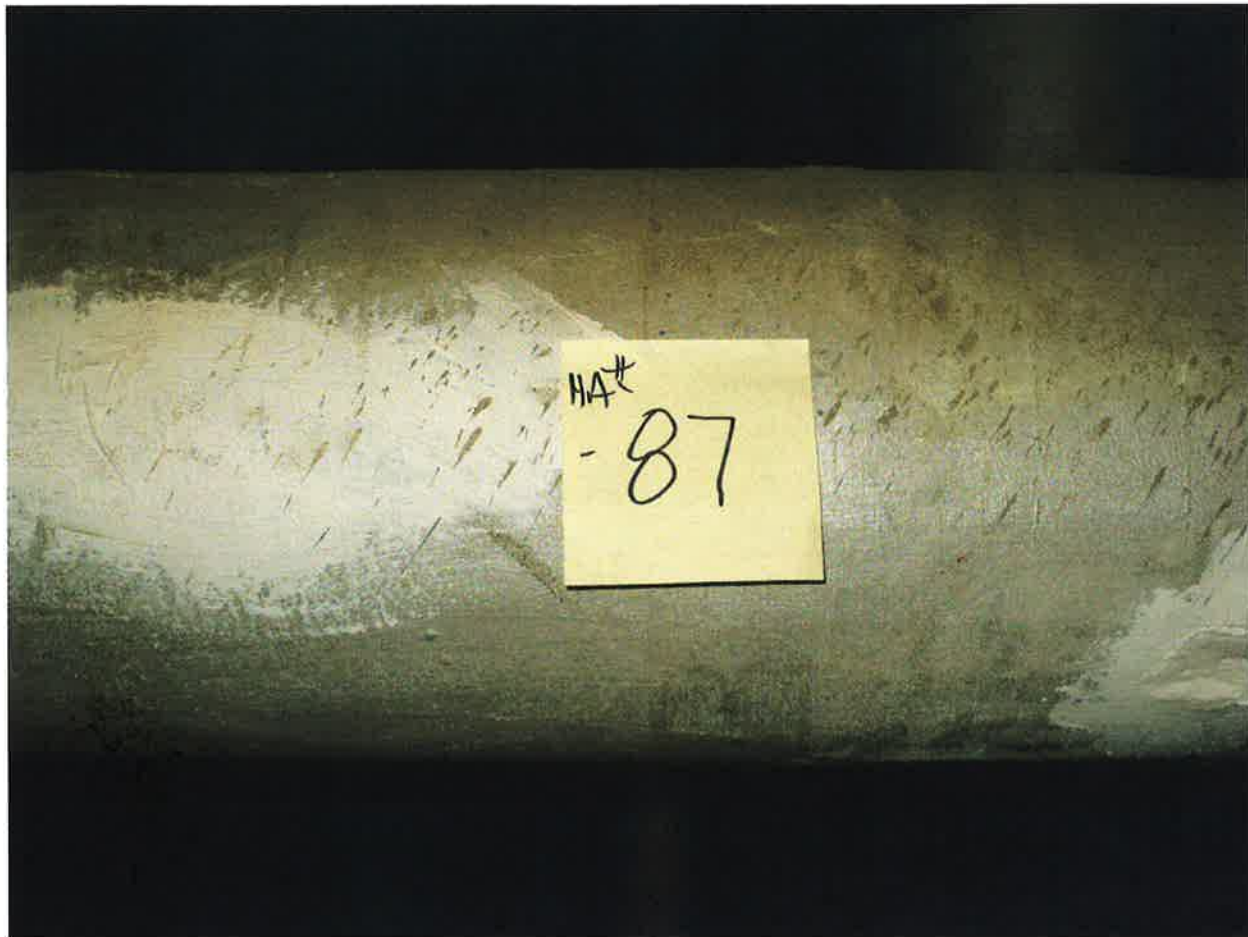
HA #84 – Non asbestos containing 6” brown  
baseboard and associated mastic



HA #85 – Non asbestos containing black and gray rolled-on linoleum and associated mastic



HA #86 – Non asbestos containing 12” x 12” blue floor tile  
with marble pattern and associated mastic



HA #87 – Asbestos containing hot heating water supply pipe straight insulation (mag insulation)





HA #88 – Non asbestos containing 12” x 12” white ceiling tile  
with fissures and associated glue pods



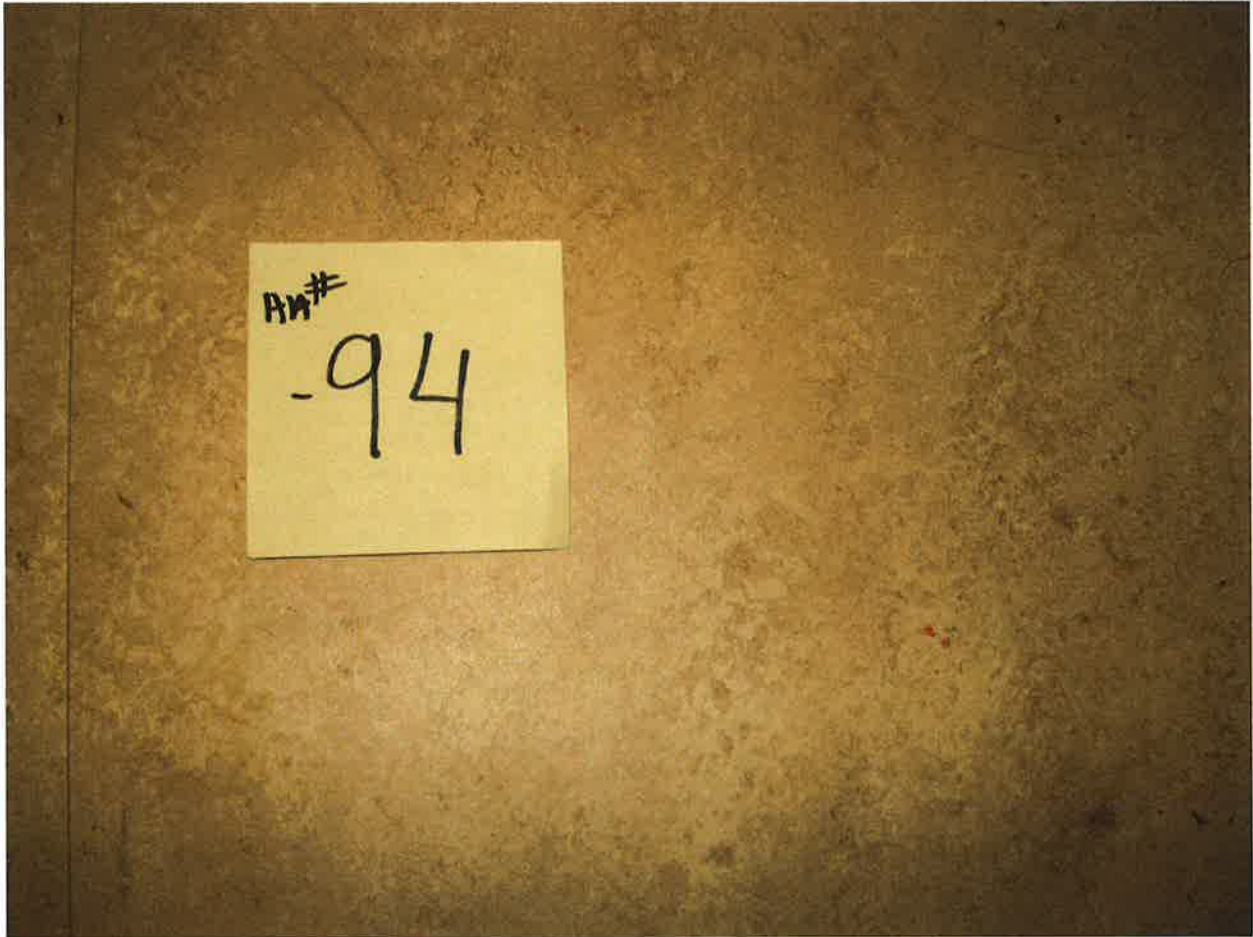
HA #90 – Non asbestos containing black tar  
paper on fiberglass insulation squares



HA #92 – Assumed asbestos containing tan linoleum with brown and white specks and associated mastic



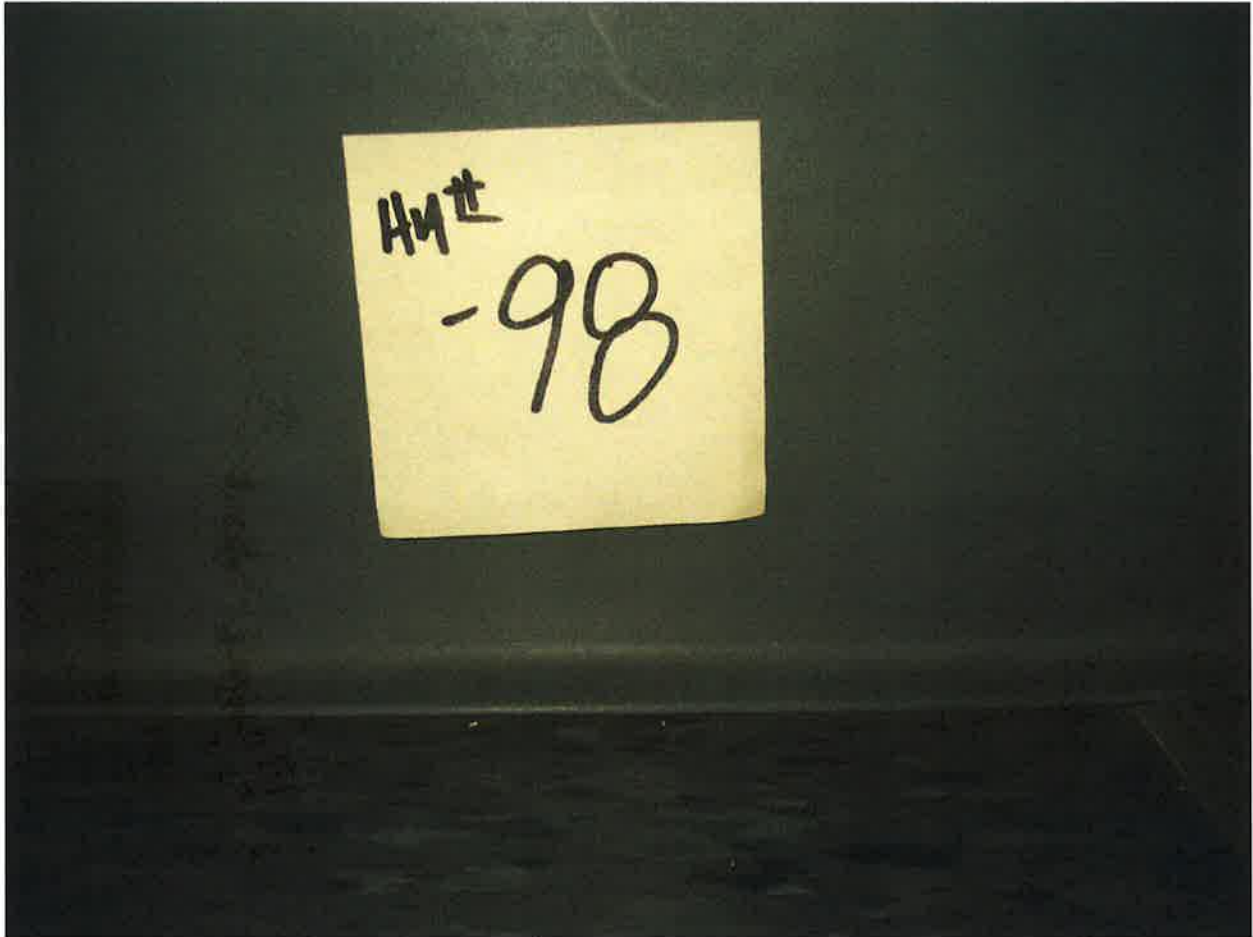
HA #93 – Non asbestos containing 2' x 2' white drop-in ceiling tile with rough texture



HA #94 – Non asbestos containing 12” x 12” tan swirl  
pattern floor tile and associated mastic



HA #97 – Non asbestos containing gray stair tread  
and associated mastic

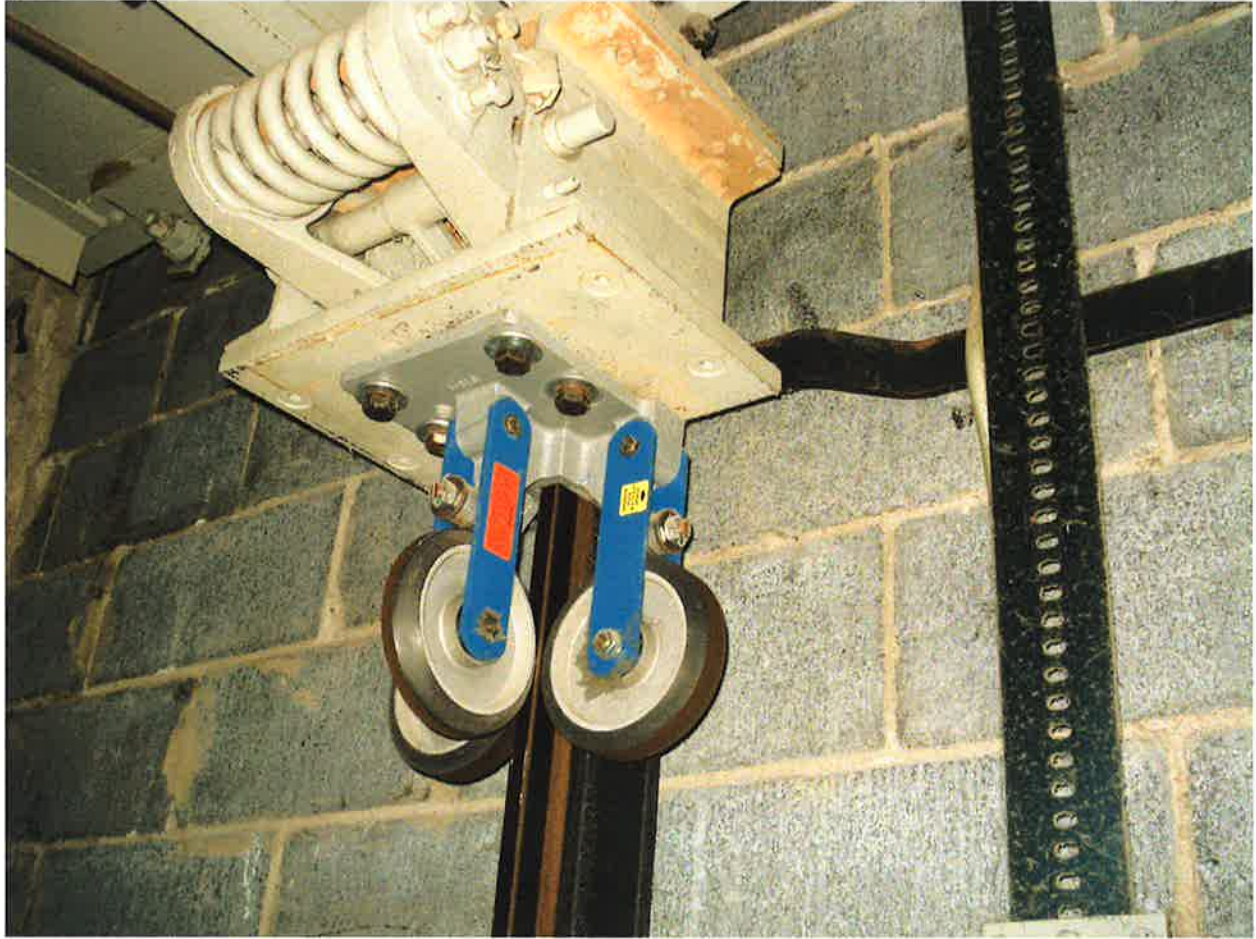


HA #98 – Non asbestos containing 6” gray baseboard  
and associated mastic



HA #99 – Asbestos containing troweled on beam material (white)





North central elevator cable system



North central elevator cable system



HA #89 – Assumed asbestos-containing freight elevator brake