

MICHIGAN STATE UNIVERSITY

MEMORANDUM

To: Mark Lutkenhoff, PIA for Asbestos, Physical Plant

From: Zach Hansmann, Environmental Coordinator, EHS

Date: September 22, 2011

RE: Clinical Center Skim Coat Plaster Clarification: Bldg 200 – Clinic Wing

It was recently brought to my attention that the original Clinical Center building inspection performed by Fishbeck, Thompson, Carr, and Huber (FTC&H) in February of 2008 improperly sampled *Homogenous Area number 7 - Drywall with paster skim coat*. Specifically, samples were not collected from each building and building construction history was not taken into consideration. Of the eight original samples collected, only one tested positive for asbestos. This single positive sample was collected in building 202, which is not connected to buildings 200 or 201 in any way. As a result of this poor inspection 359,980 square feet of this material was identified as asbestos containing material (ACM) throughout all three buildings.



On September 14, 2011 I collected additional samples from building 200 in an attempt to further delineate the extent of the asbestos containing drywall and plaster skim coat. All samples collected in this building tested negative for asbestos.

Please update your copies of the asbestos inspection report for Clinical Center Building 200 to identify HA #7 – Drywall with plaster skim coat as a non-asbestos containing material.

I have attached a bulk sample log, bulk sample analytical results, sample location maps, and a building history map to this memo.

Please let me know if you have any questions.

DEPARTMENT OF
**ENVIRONMENTAL
HEALTH AND
SAFETY**

Office of Environmental
Compliance

Michigan State University
150 Giltner Hall
East Lansing, MI
48824-1101

517/355-0153
Fax: 517/432-6686
www.ehs.msu.edu

BULK SAMPLE LOG

HA #	TOTAL FOOTAGE	MATERIAL TYPE	MATERIAL CONDITION	F/NF	MATERIAL ACM (Y/N)	ASBESTOS DETECTED* (Y/N)	SAMPLE #	SAMPLE LOCATION
1					N	N	1-1	closet wall in A101B
DESCRIPTION: Skim plaster on corner bead					NOTES:	N	1-2	corner in A101 at service counter
2					N	N	2-1	closet wall in A101B
DESCRIPTION: Drywall with plaster skim coat					NOTES:	N	2-2	northeast wall in A100A
						N	2-3	east wall above ceiling in A144A
						N	2-4	southeast wall in A143
						N	2-5	east wall of A116
						N	2-6	northeast corner of AM130
						N	2-7	north corner in AM205
						N	2-8	west wall in AM235
3					N	N	3-1	drywall joint compound near stair 8
DESCRIPTION: Drywall joint compound					NOTES:	N	3-2	drywall joint compound outside A-117-MD
						N	3-3	drywall joint compound outside A-117-MD (AC2 door)
DESCRIPTION:					NOTES:			
DESCRIPTION:					NOTES:			

BULK SAMPLE ANALYTICAL REPORT

Fibertec IHS Project #30345-1
NVLAP Accreditation #101510-0

Client Name: Michigan State University
Project Name: Clinical Center - A Wing
Summary: 13 Submitted Bulk Samples, 29 Sample Layers Analyzed.

Date Sampled: 9/14/2011 Client P.O. #: N/A
Date Submitted: 9/14/2011 C.O.C. #: 105965
Date Analyzed: 9/15/2011

Fibertec Sample No.	Client I.D. No.	Description / Location	Asbestos Type	Non-Asbestos Containing Portion	Analyst
1-1	1-1	White granular material, skim plaster on corner bead, closet wall in A101B.	NAD	Non-fibrous material 97% Cellulose fibers 3%	CBD
1-2	1-2	White granular material, skim plaster on corner bead, corner in A101 at service counter.	NAD	Non-fibrous material 97% Cellulose fibers 3%	CBD
2-1	2-1	Gray granular material, skim plaster over plaster and drywall, closet wall in A101B. Layer 1 of 3.	NAD	Non-fibrous material 85% Cellulose fibers 15%	CBD
2-1	2-1	Brown fibrous material, skim plaster over plaster and drywall, closet wall in A101B. Layer 2 of 3.	NAD	Cellulose fibers 90% Non-fibrous material 10%	CBD
2-1	2-1	White tabular material, skim plaster over plaster and drywall, closet wall in A101B. Layer 3 of 3.	NAD	Non-fibrous material 97% Cellulose fibers 3%	CBD
2-2	2-2	Gray granular material, skim plaster over plaster and drywall, NE wall in A100A. Layer 1 of 3.	NAD	Non-fibrous material 85% Cellulose fibers 15%	CBD
2-2	2-2	Brown fibrous material, skim plaster over plaster and drywall, NE wall in A100A. Layer 2 of 3.	NAD	Cellulose fibers 90% Non-fibrous material 10%	CBD

BULK SAMPLE ANALYTICAL REPORT

Fibertec IHS Project #30345-1
NVLAP Accreditation #101510-0

Client Name: Michigan State University
Project Name: Clinical Center - A Wing
Summary: 13 Submitted Bulk Samples, 29 Sample Layers Analyzed.

Date Sampled: 9/14/2011
Date Submitted: 9/14/2011
Date Analyzed: 9/15/2011

Client P.O. #: N/A
C.O.C. #: 105965

Fibertec Sample No.	Client I.D. No.	Description / Location	Asbestos Type	Non-Asbestos-Containing Portion	Analyst
2-2	2-2	White tabular material, skim plaster over plaster and drywall, NE wall in A100A. Layer 3 of 3.	NAD	Non-fibrous material 97% Cellulose fibers 3%	CBD
2-3	2-3	Gray granular material, skim plaster over plaster and drywall, E wall above ceiling in A144A. Layer 1 of 3.	NAD	Non-fibrous material 90% Cellulose fibers 10%	CBD
2-3	2-3	Gray cementitious material, skim plaster over plaster and drywall, E wall above ceiling in A144A. Layer 2 of 3.	NAD	Non-fibrous material 97% Cellulose fibers 3%	CBD
2-3	2-3	White tabular material, skim plaster over plaster and drywall, E wall above ceiling in A144A. Layer 3 of 3.	NAD	Non-fibrous material 95% Cellulose fibers 5%	CBD
2-4	2-4	Gray granular material, skim plaster over plaster and drywall, SE wall in A143. Layer 1 of 3.	NAD	Non-fibrous material 85% Cellulose fibers 15%	CBD
2-4	2-4	Brown fibrous material, skim plaster over plaster and drywall, SE wall in A143. Layer 2 of 3.	NAD	Cellulose fibers 95% Non-fibrous material 5%	CBD
2-4	2-4	White tabular material, skim plaster over plaster and drywall, SE wall in A143. Layer 3 of 3.	NAD	Non-fibrous material 97% Cellulose fibers 3%	CBD

BULK SAMPLE ANALYTICAL REPORT

Fibertec IHS Project #30345-1
NVLAP Accreditation #101510-0

Client Name: Michigan State University
Project Name: Clinical Center - A Wing
Summary: 13 Submitted Bulk Samples, 29 Sample Layers Analyzed.

Date Sampled: 9/14/2011 Client P.O. #: N/A
Date Submitted: 9/14/2011 C.O.C. #: 105965
Date Analyzed: 9/15/2011

Fibertec Sample No.	Client I.D. No.	Description / Location	Asbestos Type	Non-Asbestos-Containing Portion	Analyst
2-5	2-5	Gray granular material, skim plaster over plaster and drywall, E wall of A116. Layer 1 of 3.	NAD	Non-fibrous material 85% Cellulose fibers 15%	CBD
2-5	2-5	Brown fibrous material, skim plaster over plaster and drywall, E wall of A116. Layer 2 of 3.	NAD	Cellulose fibers 95% Non-fibrous material 5%	CBD
2-5	2-5	White granular material, skim plaster over plaster and drywall, E wall of A116. Layer 3 of 3.	NAD	Non-fibrous material 95% Cellulose fibers 5%	CBD
2-6	2-6	Gray granular material, skim plaster over plaster and drywall, NW corner of AM130. Layer 1 of 3.	NAD	Non-fibrous material 85% Cellulose fibers 15%	CBD
2-6	2-6	Brown fibrous material, skim plaster over plaster and drywall, NW corner of AM130. Layer 2 of 3.	NAD	Cellulose fibers 95% Non-fibrous material 5%	CBD
2-6	2-6	White tabular material, skim plaster over plaster and drywall, NW corner of AM130. Layer 3 of 3.	NAD	Non-fibrous material 95% Cellulose fibers 5%	CBD
2-7	2-7	Gray granular material, skim plaster over plaster and drywall, N wall in AM205. Layer 1 of 3.	NAD	Non-fibrous material 85% Cellulose fibers 15%	CBD

BULK SAMPLE ANALYTICAL REPORT

Fibertec IHS Project #30345-1
NVLAP Accreditation #101510-0

Client Name: Michigan State University
Project Name: Clinical Center - A Wing
Summary: 13 Submitted Bulk Samples, 29 Sample Layers Analyzed.

Date Sampled: 9/14/2011 Client P.O. #: N/A
Date Submitted: 9/14/2011 C.O.C. #: 105965
Date Analyzed: 9/15/2011

Fibertec Sample No.	Client I.D. No.	Description / Location	Asbestos Type	Non-Asbestos-Containing Portion	Analyst
2-7	2-7	Brown fibrous material, skim plaster over plaster and drywall, N wall in AM205. Layer 2 of 3.	NAD	Cellulose fibers 95% Non-fibrous material 5%	CBD
2-7	2-7	White tabular material, skim plaster over plaster and drywall, N wall in AM205. Layer 3 of 3.	NAD	Non-fibrous material 95% Cellulose fibers 5%	CBD
2-8	2-8	Gray granular material, skim plaster over plaster and drywall, W wall in AM235. Layer 1 of 3.	NAD	Non-fibrous material 85% Cellulose fibers 15%	CBD
2-8	2-8	Brown fibrous material, skim plaster over plaster and drywall, W wall in AM235. Layer 2 of 3.	NAD	Cellulose fibers 95% Non-fibrous material 5%	CBD
2-8	2-8	White tabular material, skim plaster over plaster and drywall, W wall in AM235. Layer 3 of 3.	NAD	Non-fibrous material 95% Cellulose fibers 5%	CBD
3-1	3-1	Tan granular material, drywall joint compound, near Stair 8.	NAD	Non-fibrous material 95% Cellulose fibers 5%	CBD
3-2	3-2	Tan granular material, drywall joint compound, outside of A-117-MD.	NAD	Non-fibrous material 92% Cellulose fibers 8%	CBD

BULK SAMPLE ANALYTICAL REPORT

Fibertec IHS Project #30345-1
NVLAP Accreditation #101510-0

Client Name: Michigan State University
Project Name: Clinical Center - A Wing
Summary: 13 Submitted Bulk Samples, 29 Sample Layers Analyzed.

Date Sampled: 9/14/2011
Date Submitted: 9/14/2011
Date Analyzed: 9/15/2011

Client P.O. #: N/A
C.O.C. #: 105965

Fibertec Sample No.	Client I.D. No.	Description / Location	Asbestos Type	Non-Asbestos-Containing Portion	Analyst
3-3	3-3	Tan granular material, drywall joint compound, outside of A-114-MD (ACZ door).	NAD	Non-fibrous material 95% Cellulose fibers 5%	CBD

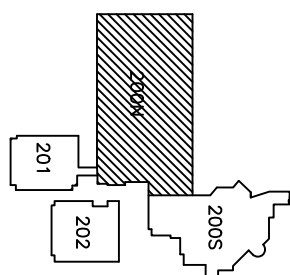
Comments

Bulk samples are analyzed using the USEPA Test Method EPA/600/R-93/116. The constituent percent reported represents an estimate of the area percent of the component. The test report relates only to items tested. This report is not intended to be used as a product endorsement by NVLAP or any agency of the U.S. Government. Fine fibers like those in floor tile may not be discernible by this method. This report shall not be reproduced, except in full, without the written approval of the laboratory. Individual sample layers are homogeneous, unless otherwise noted. Test items were received in acceptable condition. Revision 4.0 dated 12/8/2010.

If no asbestos was/were detected in the sample/samples the acronym NAD (no asbestos detected) will appear in the Asbestos Type column of the report.

Approved Signatory:  _____

Date: 9/19/2011



0_0200_01_BASE.DWG

SHEET

၆

OF 12

BUILDING NO.

200

LAST EXPORTED

LAST REVISED ON 05-26-2010
LAST REVISED BY EJS
LAST EXPORTED

LAST REVISED ON 05-26-2010

LAST REVISED ON 05-26-2010

ORIG. DRAWN BY DVC

APPROVED BY SDF
07 00 07

DATE 07-26-93SCALE $\frac{1"}{30'}$

T

LAST REVISED ON 05-26-2010

LAST REVISED BY EJS

LAST EXPORTED

BUILDING NO.

3

NO

--	--

SHEET 0

3

○

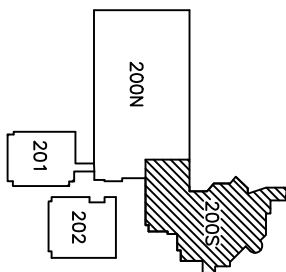
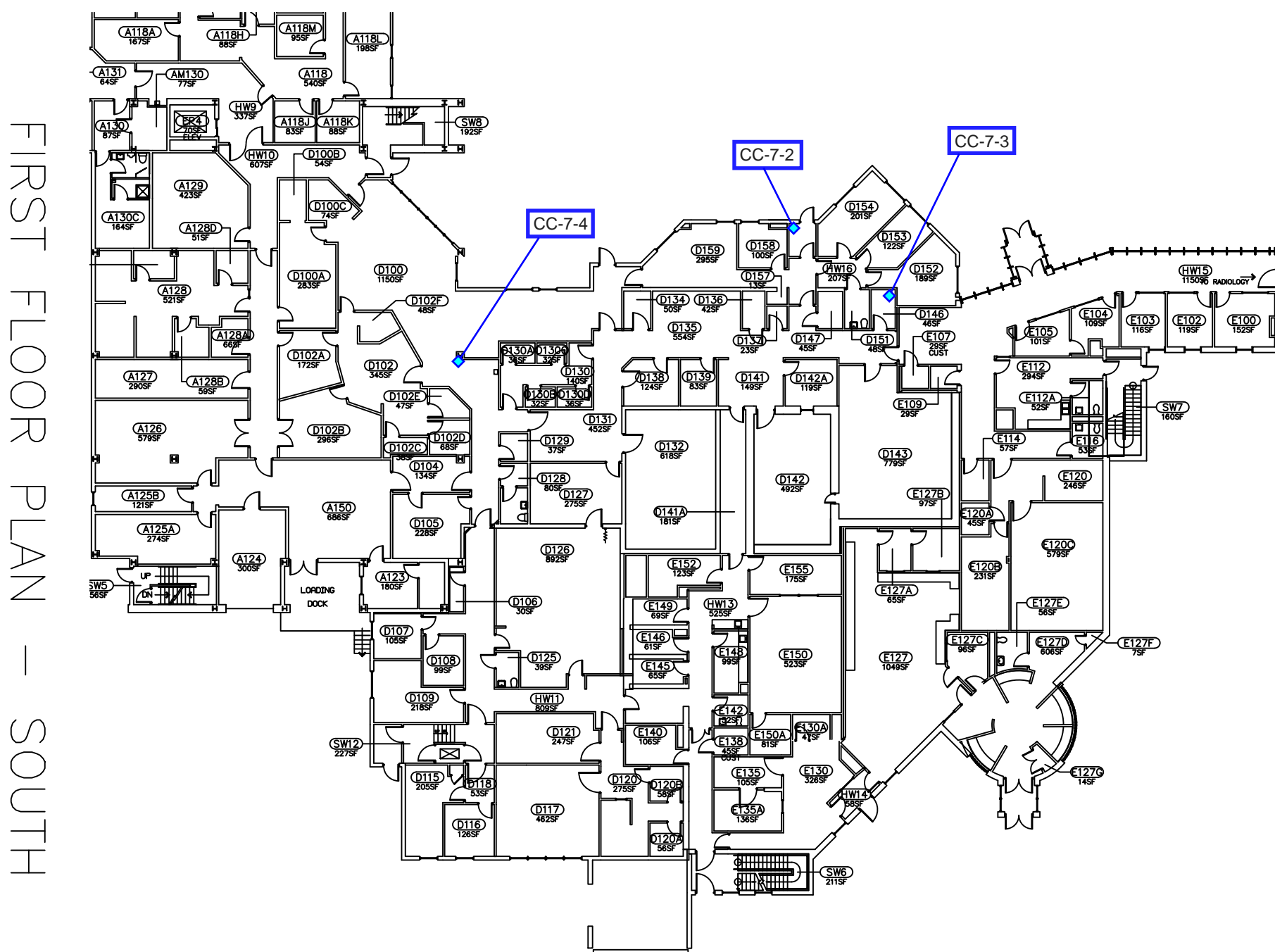
Of 12

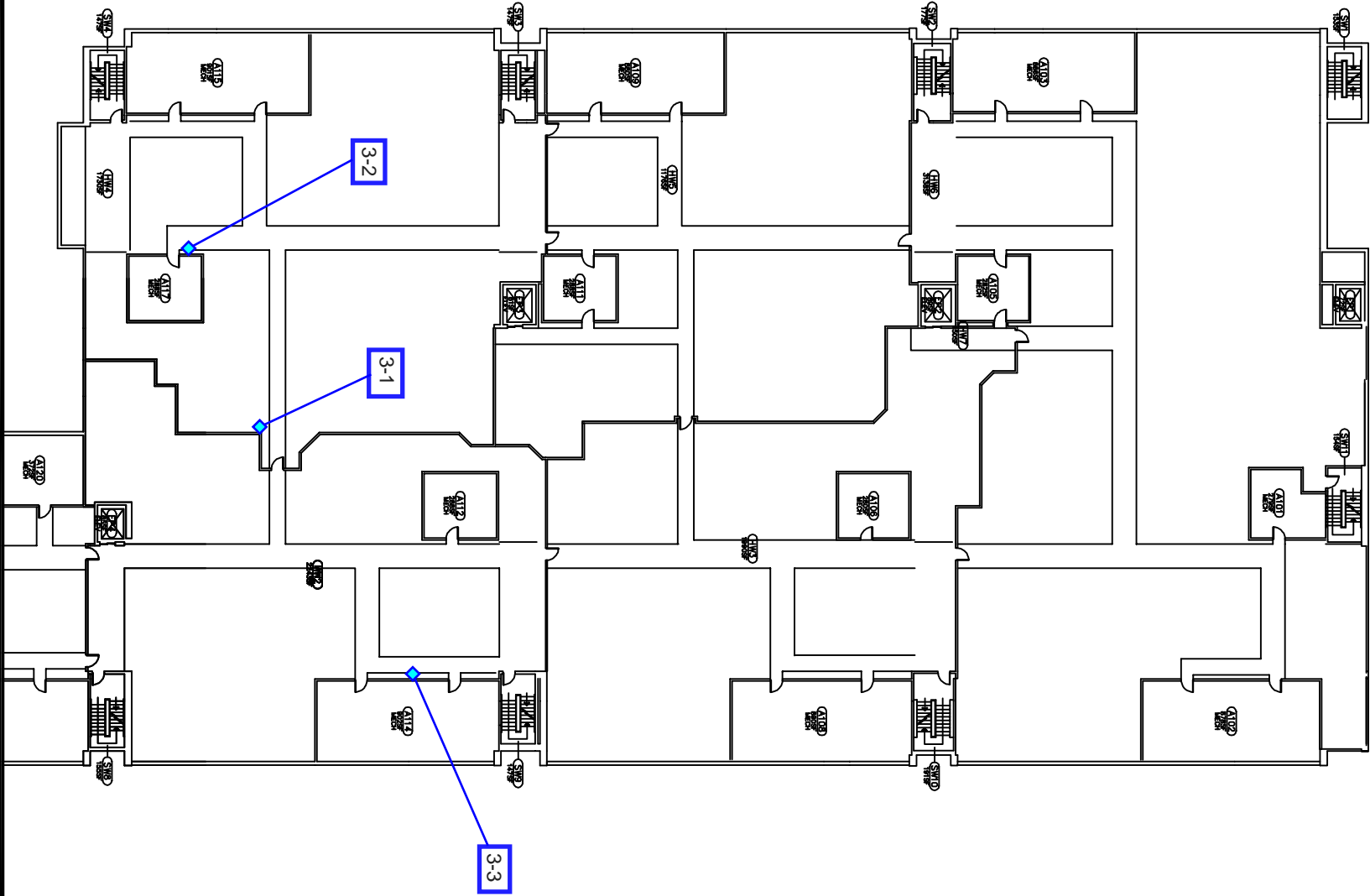
Downloaded from <http://ajphaphysocpharm.sagepub.com/> at 11:01 11 November 2014

CLINICAL CENTER – CLINIC WING

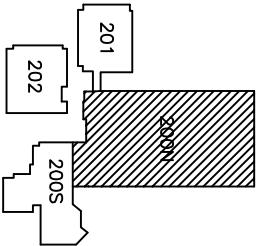
FIRST FLOOR PLAN - NORTH

MICHIGAN STATE
UNIVERSITY
PHYSICAL PLANT DIVISION
ENGINEERING AND ARCHITECTURAL SERVICES



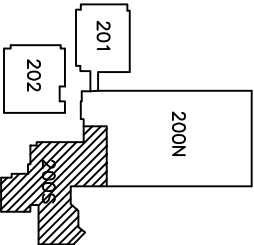


MECHANICAL DECK 1 - NORTH



O_0200_MR1_BASE.DWG

<div>CLINICAL CENTER - CLINIC WING</div> <div>MECHANICAL DECK 1 - NORTH</div>		<div>MICHIGAN STATE UNIVERSITY</div> <div>PHYSICAL PLANT DIVISION</div> <div>ENGINEERING AND ARCHITECTURAL SERVICES</div>
<div>ORIG. DRAWN BY <u>DVC</u></div> <div>APPROVED BY _____</div> <div>DATE <u>07-26-93</u></div> <div>SCALE <u>1" = 40'</u></div> <div>LAST REVISED ON <u>07-31-07</u></div> <div>LAST REVISED BY <u>AWL</u></div> <div>LAST EXPORTED _____</div>	<div></div>	<div>BUILDING NO.</div> <div>200</div> <div>SHEET</div> <div>9</div> <div>OF 12</div>



→ TO RADIOLOGY

MECHANICAL DECK 1 - SOUTH



BUILDING NO.

200

SHEET

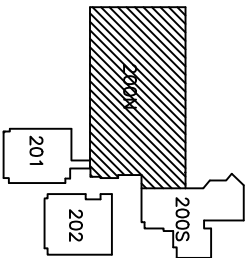
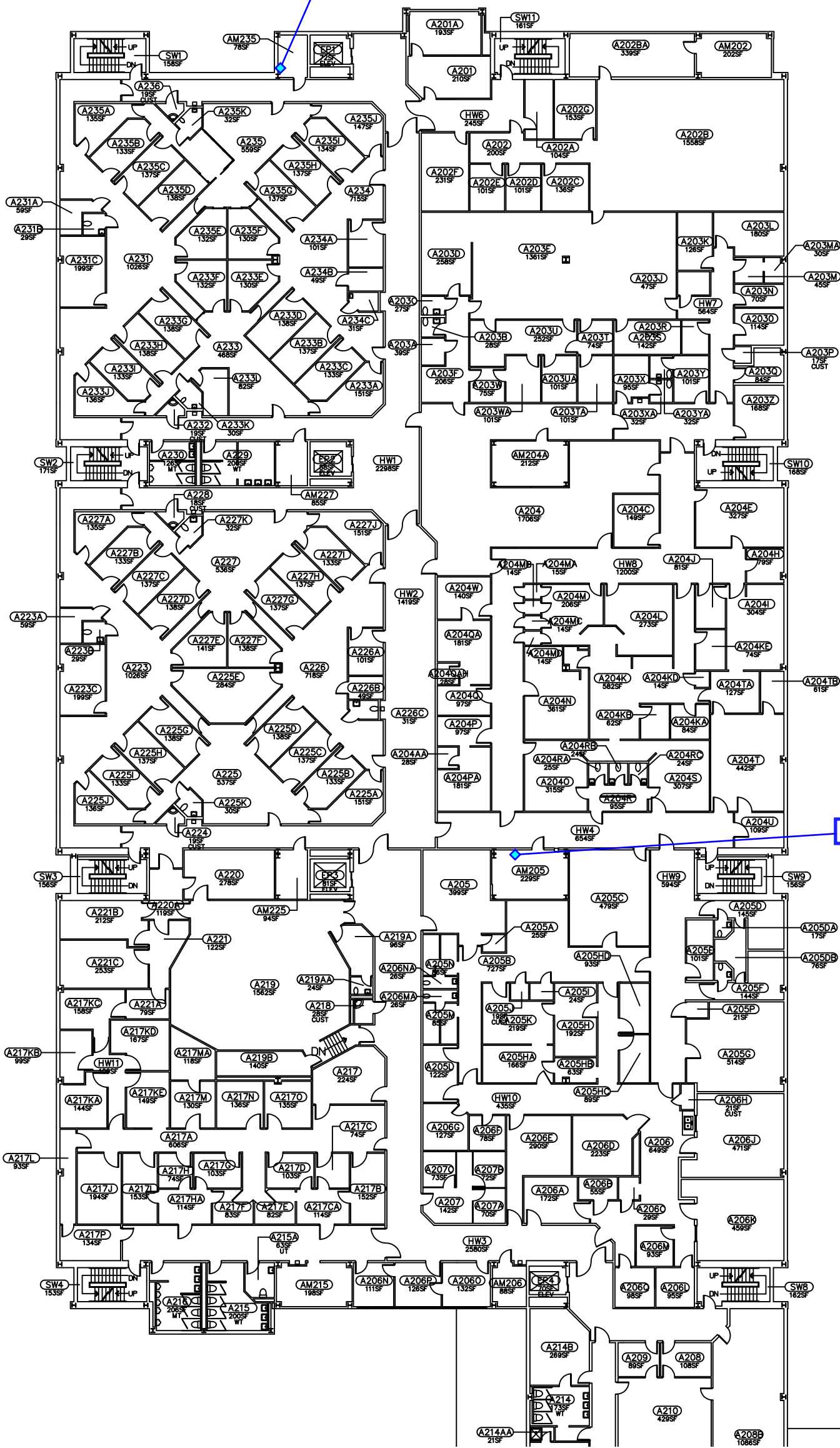
10

0_0200_MR1_BASE.DWG

Negative Sample

2-8

2-7



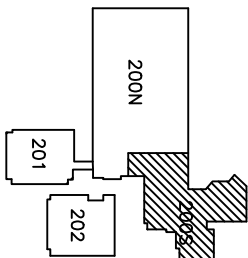
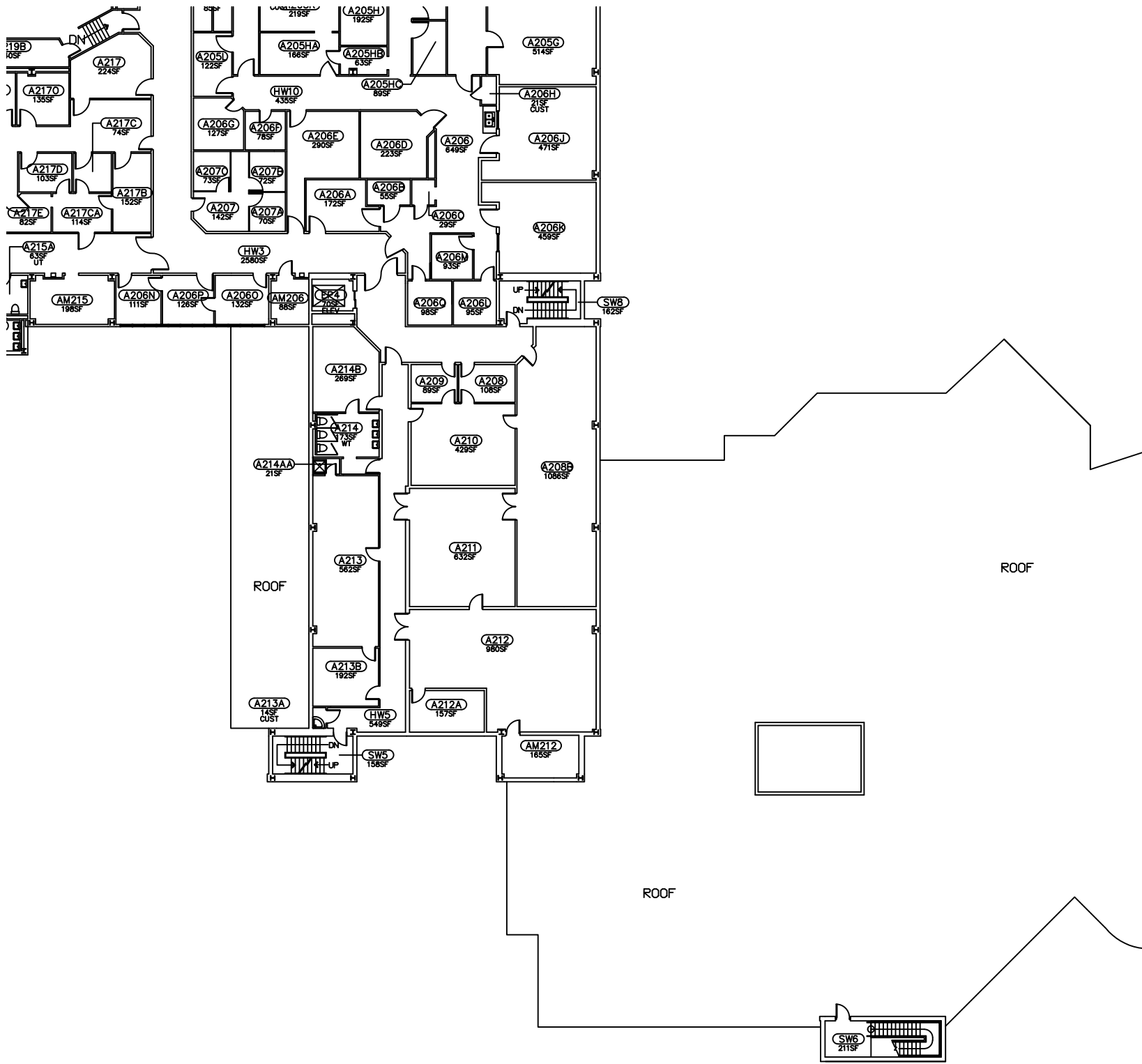
O_0200_02_BASE.DWG

SHEET 5 OF 12	BUILDING NO. 200	ORIG. DRAWN BY DVC
		APPROVED BY SDF
		DATE 07-26-93
		SCALE 1" = 30'
		LAST REVISED ON 08-26-10
LAST REVISED BY GHK		
LAST EXPORTED		

	CLINICAL CENTER - CLINIC WING	
	SECOND FLOOR PLAN - NORTH	

MICHIGAN STATE
UNIVERSITY
PHYSICAL PLANT DIVISION
ENGINEERING AND ARCHITECTURAL SERVICES

SECOND FLOOR PLAN – SOUTH



O_0200_02_BASE.DWG

SHEET 6 OF 12	200	BUILDING NO.	ORIG. DRAWN BY DVC APPROVED BY SDF DATE 07-26-93 SCALE 1" = 30'		LAST REVISED ON 7/12/11
					LAST REVISED BY RJR
					LAST EXPORTED

CLINICAL CENTER – CLINIC WING

SECOND FLOOR PLAN - SOUTH

MICHIGAN STATE
UNIVERSITY
PHYSICAL PLANT DIVISION
ENGINEERING AND ARCHITECTURAL SERVICES

