

Regional Chilled Water Plant #1



HA #1 – Non asbestos-containing 2' x 2' white lay-in ceiling tile
with pin holes and fissures

For more information contact MSU Environmental Health and Safety – (517) 353-8956

Regional Chilled Water Plant #1



HA #2 – Non asbestos-containing 4" brown cove molding
and associated mastic

For more information contact MSU Environmental Health and Safety – (517) 353-8956

Regional Chilled Water Plant #1



HA #3 – Asbestos-containing 12" x 12" brown floor tile with cream streaks and associated non asbestos-containing mastic

For more information contact MSU Environmental Health and Safety – (517) 353-8956

Regional Chilled Water Plant #1



HA #4 – Asbestos-containing steam/condensate supply and return pipe straight insulation

For more information contact MSU Environmental Health and Safety – (517) 353-8956

Regional Chilled Water Plant #1



HA #5 – Asbestos-containing steam/condensate supply and return pipe joint and hanger insulation

For more information contact MSU Environmental Health and Safety – (517) 353-8956

Regional Chilled Water Plant #1



HA #6 – Non asbestos-containing domestic water supply
pipe joint and hanger insulation

For more information contact MSU Environmental Health and Safety – (517) 353-8956

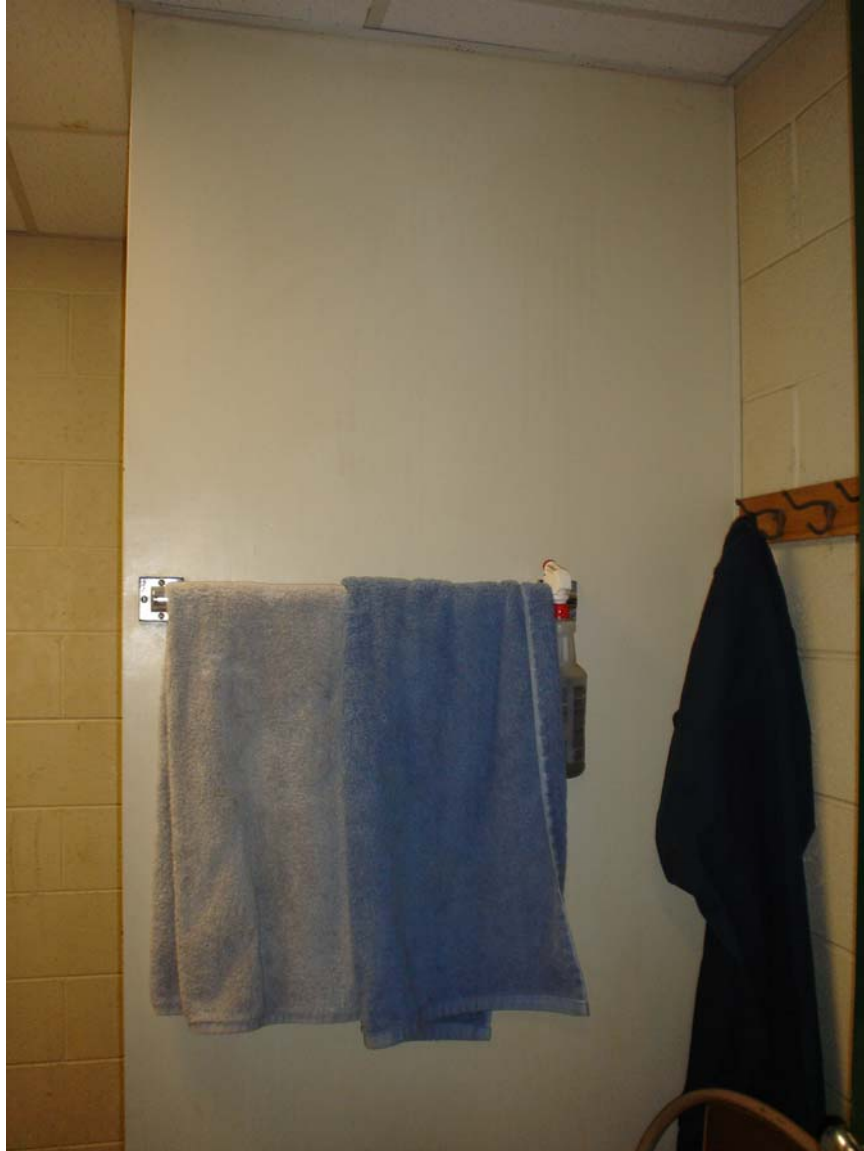
Regional Chilled Water Plant #1



HA #7 – Non asbestos-containing chilled water supply and return pipe joint and hanger insulation

For more information contact MSU Environmental Health and Safety – (517) 353-8956

Regional Chilled Water Plant #1



HA #8 – Asbestos-containing drywall

HA #9 – Asbestos-containing drywall joint compound

For more information contact MSU Environmental Health and Safety – (517) 353-8956

Regional Chilled Water Plant #1



HA #10 – Assumed asbestos-containing gray building caulk compound

For more information contact MSU Environmental Health and Safety – (517) 353-8956

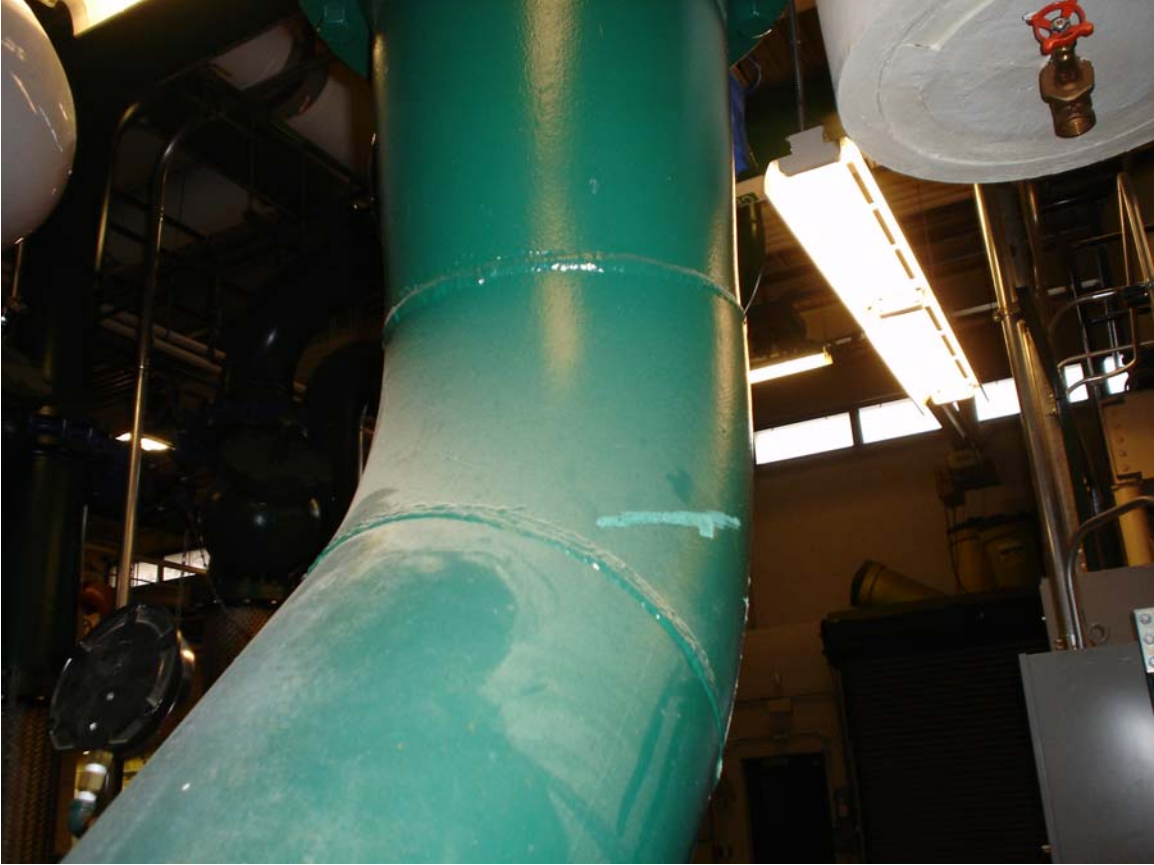
Regional Chilled Water Plant #1



Paint HA #1 – Lead-containing brown paint

For more information contact MSU Environmental Health and Safety – (517) 353-8956

Regional Chilled Water Plant #1



Paint HA #3 – Lead-containing aqua paint

For more information contact MSU Environmental Health and Safety – (517) 353-8956

Regional Chilled Water Plant #1



Paint HA #4 – Lead-containing yellow paint

For more information contact MSU Environmental Health and Safety – (517) 353-8956

Regional Chilled Water Plant #1



Paint HA #5 – Lead-containing red paint

For more information contact MSU Environmental Health and Safety – (517) 353-8956

Regional Chilled Water Plant #1



Paint HA #6 – Lead-containing white paint

For more information contact MSU Environmental Health and Safety – (517) 353-8956

Regional Chilled Water Plant #1



Paint HA #7 – Lead-containing blue paint

For more information contact MSU Environmental Health and Safety – (517) 353-8956

Regional Chilled Water Plant #1



Exterior of building

For more information contact MSU Environmental Health and Safety – (517) 353-8956

Regional Chilled Water Plant #1



Exterior of building

For more information contact MSU Environmental Health and Safety – (517) 353-8956