



ROOM 125 - WATER DAMAGED AIR CELL



ROOM 114C - FIRE DOOR LABEL

SITE PHOTOGRAPHS



engineers
scientists
architects
constructors

Michigan State University
Physical Plant Division-Engineering and Architectural Services

Farrall Hall
Asbestos Inspection

PROJECT NO.

G06371

APPENDIX

5



engineers
scientists
architects
constructors

Michigan State University
Physical Plant Division-Engineering and Architectural Services

Farrall Hall
Asbestos Inspection



ROOM 210 - DAMAGED 6" BLACK VINYL BASE



ROOM 116 - OLD CEILING SYSTEM ABOVE DROP CEILING

N: \06371\RASTER\IMG_2983.JPG
N: \06371\RASTER\IMG_2983.JPG

N: \06371\RASTER\IMG_0009.JPG
N: \06371\RASTER\IMG_0009.JPG

N: \06371\RASTER\IMG_0004.JPG
N: \06371\RASTER\IMG_0004.JPG

PLOT INFO: N:\06371\Z00106371.DWG DATE: 8/24/2006 TIME: 12:55:06 PM USER: ACS

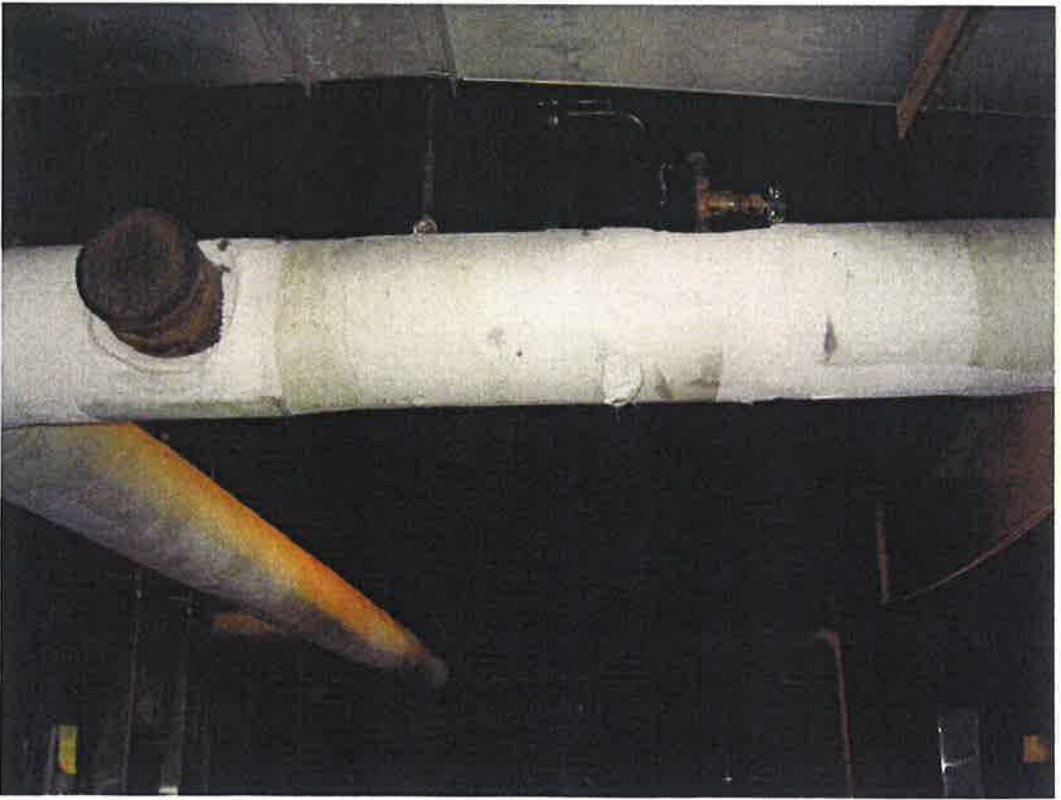
PROJECT NO.
G06371
APPENDIX

5

SITE PHOTOGRAPHS



2ND FLOOR – VINYL FLOOR TILE SYSTEM



ROOM 300 – DAMAGED AIR CELL



engineers
 scientists
 architects
 constructors

Michigan State University
 Physical Plant Division-Engineering and Architectural Services

Farrall Hall
 Asbestos Inspection

PROJECT NO.
 G06371

APPENDIX

SITE PHOTOGRAPHS

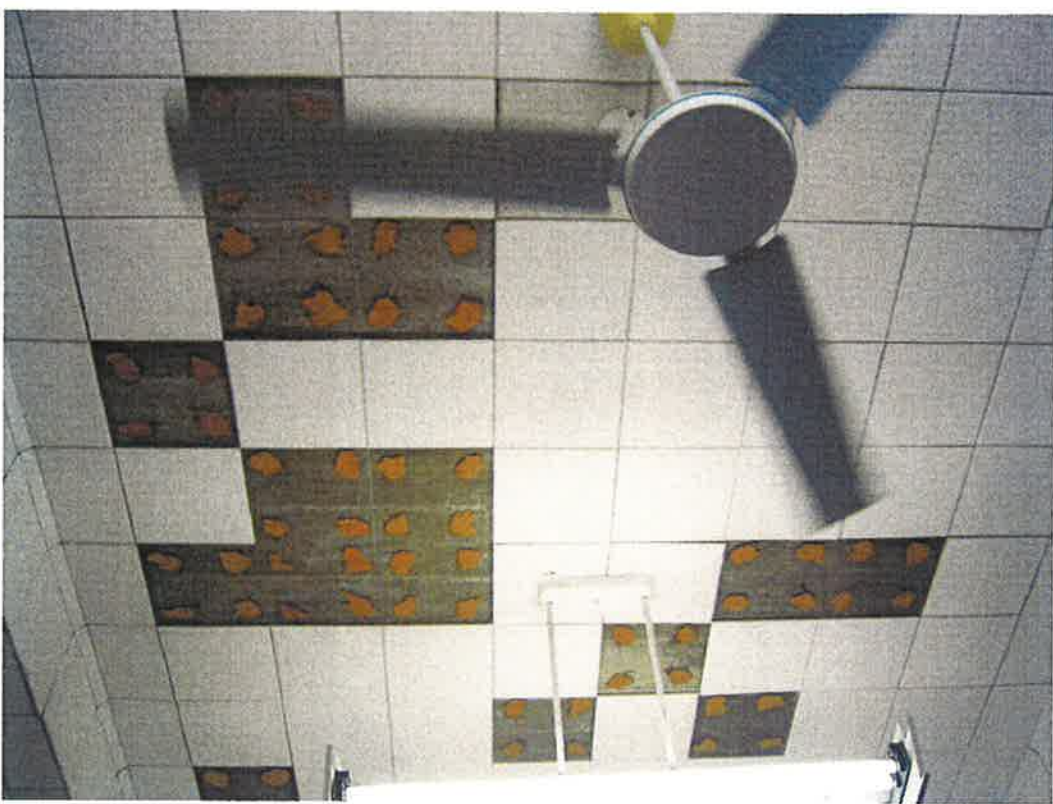
PLOT INFO: N: \06371\RASTER\IMG_0004.JPG DATE: 8/24/2006 TIME: 12:55:43 PM USER: ACS
 N: \06371\RASTER\IMG_0009.JPG
 N: \06371\RASTER\IMG_2983.JPG
 :Z00106371.DWG



engineers
 scientists
 architects
 constructors

Michigan State University
 Physical Plant Division-Engineering and Architectural Services

Farrall Hall
 Asbestos Inspection



ROOM 102 - DAMAGED AIR CELL RISER



ROOM 120B - OLDER 1'X1' GLUE ON CEILING TILE AND CLUE PODS

PROJECT NO.
 G06371

APPENDIX

5

SITE PHOTOGRAPHS

N: \06371\RASTER\IMG_2918.JPG
 N: \06371\RASTER\IMG_2983.JPG

N: \06371\RASTER\IMG_0008.JPG
 N: \06371\RASTER\IMG_0009.JPG

N: \06371\RASTER\IMG_0003.JPG
 N: \06371\RASTER\IMG_0004.JPG

DATE: 8/24/2006 TIME: 12:57:00 PM USER: ACS

PLOT INFO: N: \06371\Z00106371.DWG



engineers
scientists
architects
constructors

Michigan State University
Physical Plant Division-Engineering and Architectural Services

Farrall Hall
Asbestos Inspection



ROOM 5 - AIR CELL USED AS BULLETIN BOARD

SITE PHOTOGRAPHS

PROJECT NO.
G06371

APPENDIX

5

N:\06371\RASTER\IMG_2983.JPG

N:\06371\RASTER\IMG_0009.JPG

N:\06371\RASTER\IMG_0004.JPG

PLOT INFO: N:\06371\06371.DWG DATE: 8/24/2006 TIME: 1:00:10 PM USER: ACS