

Photo Log
Michigan State University, Communications Arts and Sciences Building
Asbestos Containing Homogeneous Materials List

1. Elevation view of the Comm. Arts and Sciences Building.



2. 12" x 12" Cream F. T. w/Brown Streaks and Mastic, (Mastic only) HA# 1

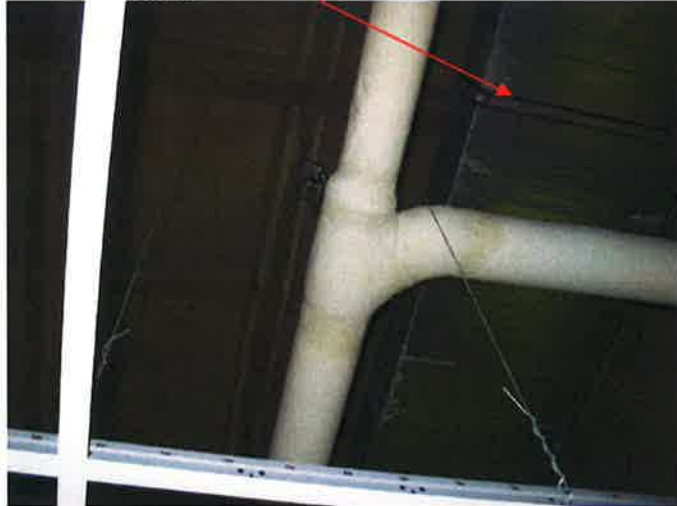


3. 12" x 12" Tan F. T. w/ Cream and Brown Streaks and Mastic, HA# 5.



Photo Log
Michigan State University, Communications Arts and Sciences Building
Asbestos Containing Homogeneous Materials List

4. Red HVAC Duct Caulk, HA# 8.



5. Assumed Fire Door and Frame, HA# 22.

