

Old Horticulture Photo Log



Michigan State University
Old Horticulture Building

For more information contact MSU Environmental Health and Safety – (517) 353-8956

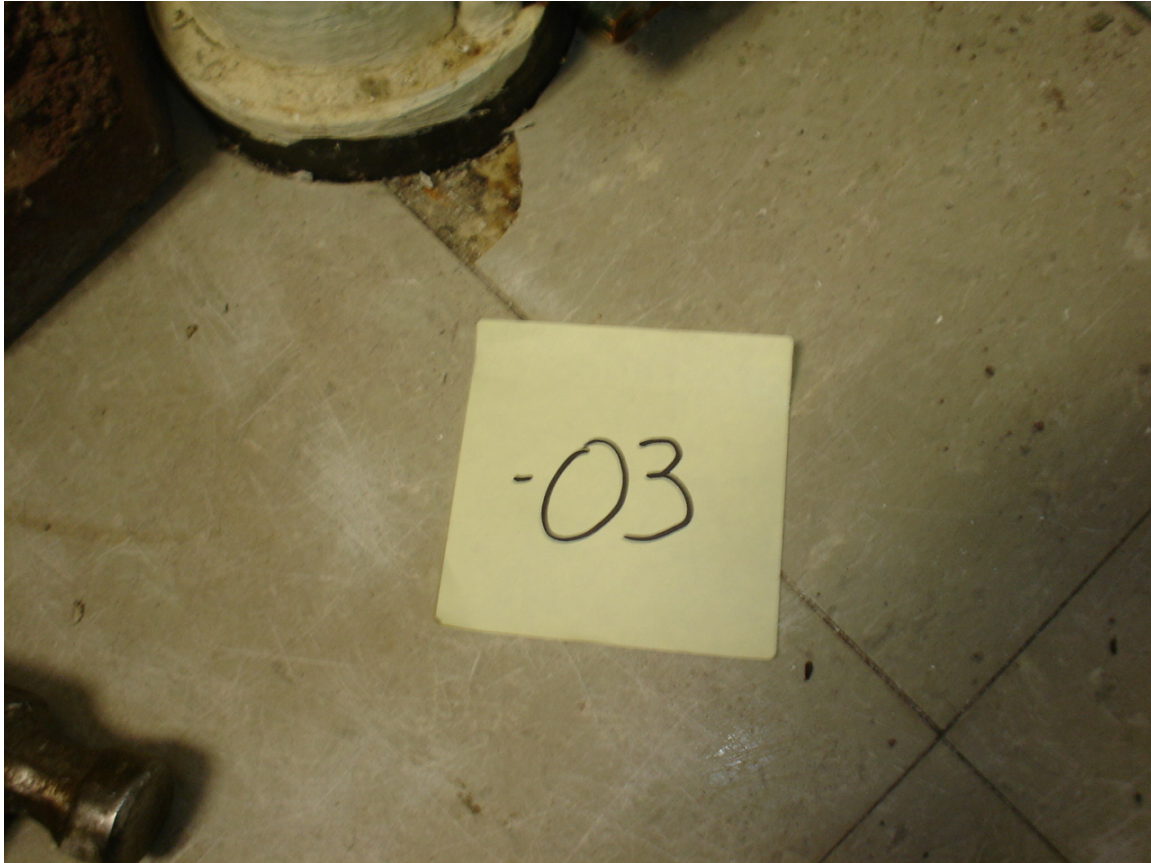
Old Horticulture Photo Log



HA #1 – Non asbestos-containing 2' x 2' white drop-in ceiling tile
with pin holes and fissures

For more information contact MSU Environmental Health and Safety – (517) 353-8956

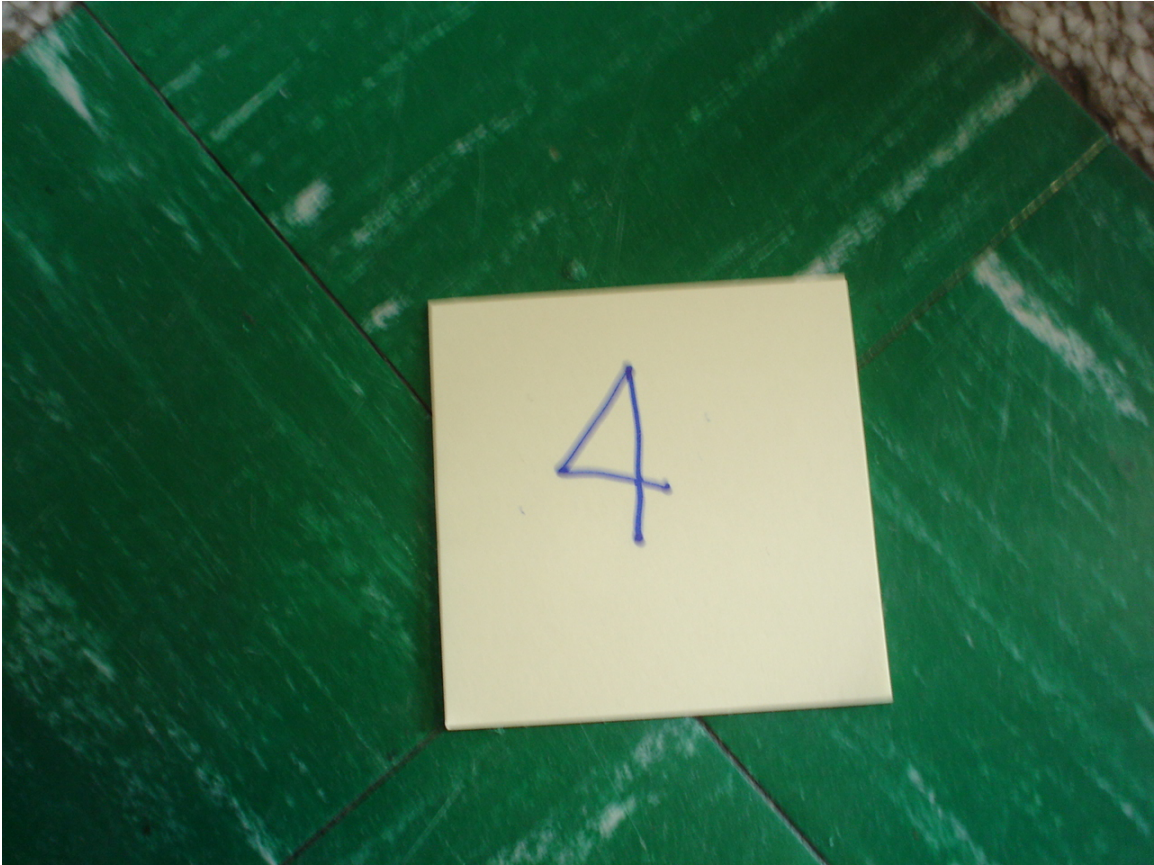
Old Horticulture Photo Log



HA #3 – Non asbestos-containing 12" x 12" gray floor tile with white and gray marble pattern and associated mastic

For more information contact MSU Environmental Health and Safety – (517) 353-8956

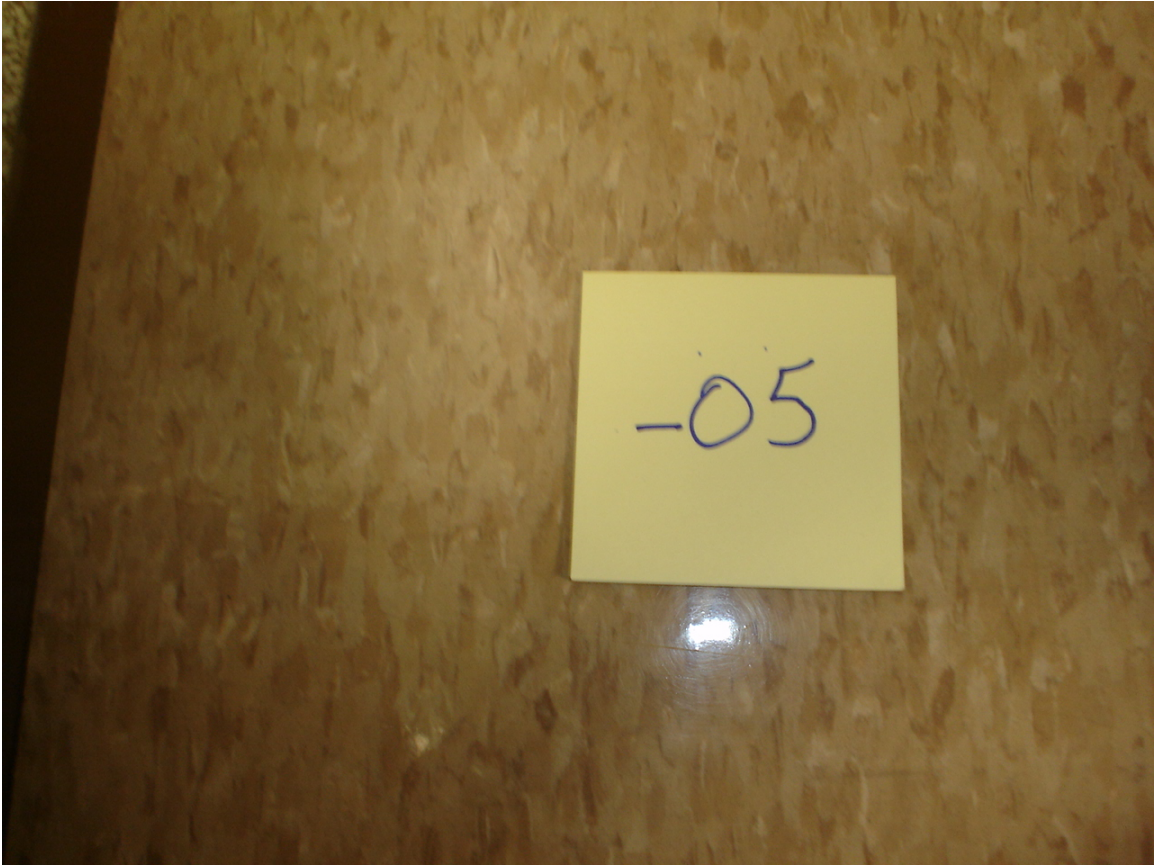
Old Horticulture Photo Log



HA #4 – Non asbestos-containing 12" x 12" green floor tile with white streaks and associated asbestos-containing mastic

For more information contact MSU Environmental Health and Safety – (517) 353-8956

Old Horticulture Photo Log



HA #5 – Non asbestos-containing 12" x 12" tan floor tile
with marble pattern and associated mastic

For more information contact MSU Environmental Health and Safety – (517) 353-8956

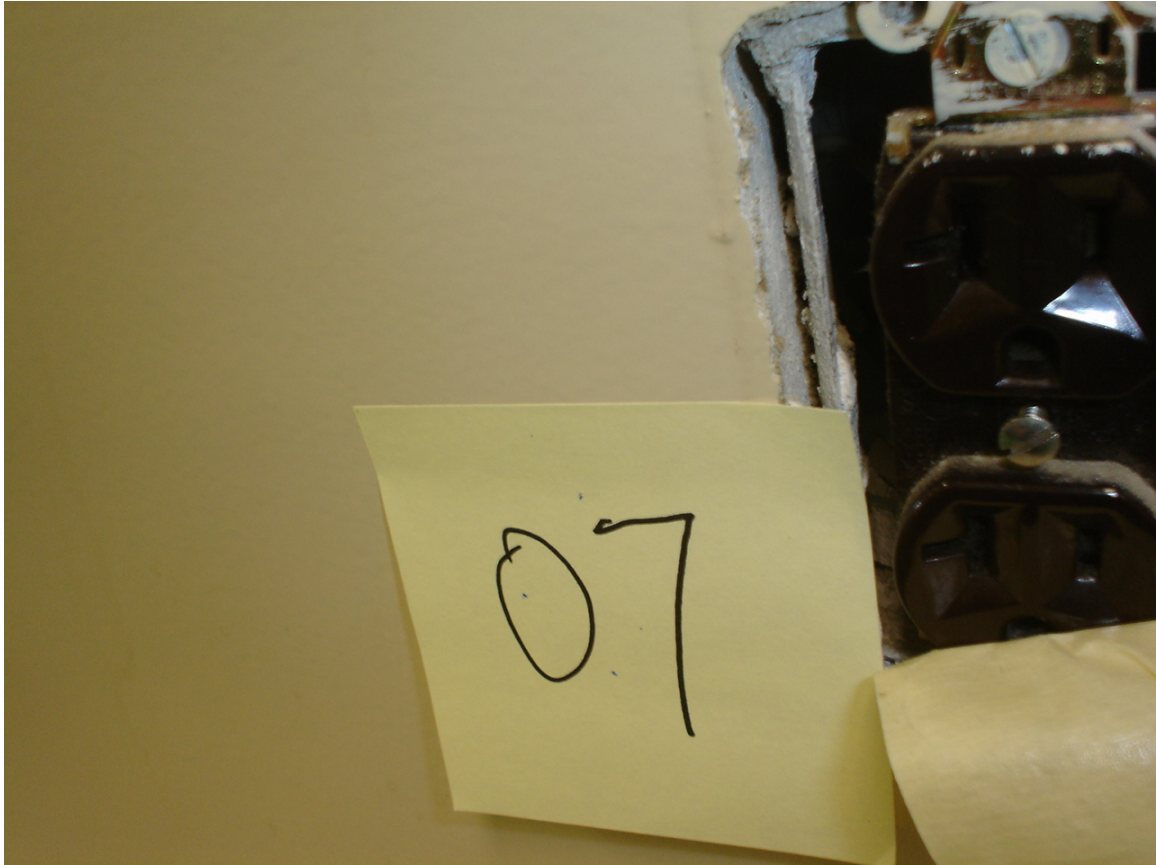
Old Horticulture Photo Log



HA #6 – Assumed asbestos-containing fire door and frame

For more information contact MSU Environmental Health and Safety – (517) 353-8956

Old Horticulture Photo Log



HA #7 – Non asbestos-containing smooth wall
and ceiling plaster over drywall

For more information contact MSU Environmental Health and Safety – (517) 353-8956

Old Horticulture Photo Log



HA #8 – Assumed asbestos-containing window and door frame
caulk compound

For more information contact MSU Environmental Health and Safety – (517) 353-8956

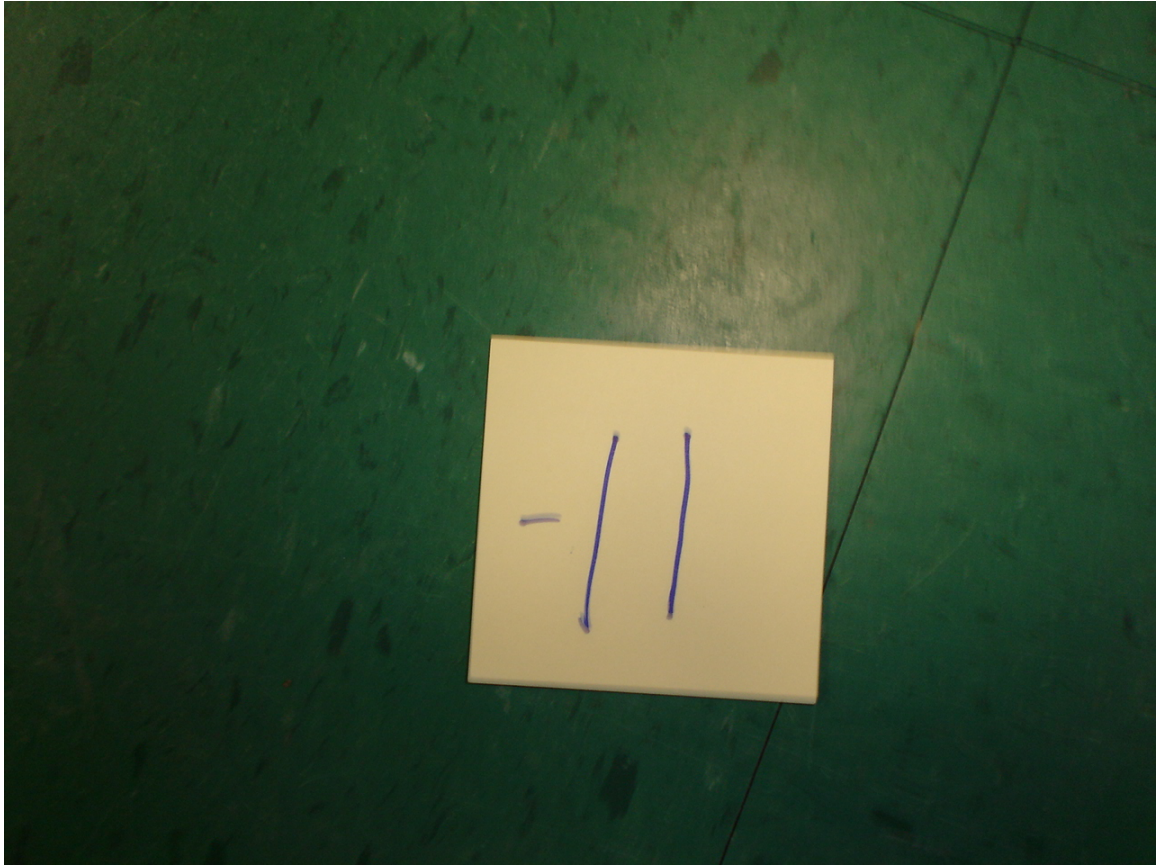
Old Horticulture Photo Log



HA #10 – Non asbestos-containing 4" green cove molding
and associated mastic

For more information contact MSU Environmental Health and Safety – (517) 353-8956

Old Horticulture Photo Log



HA #11 – Non asbestos-containing 12" x 12" green floor tile
with marble pattern and associated mastic

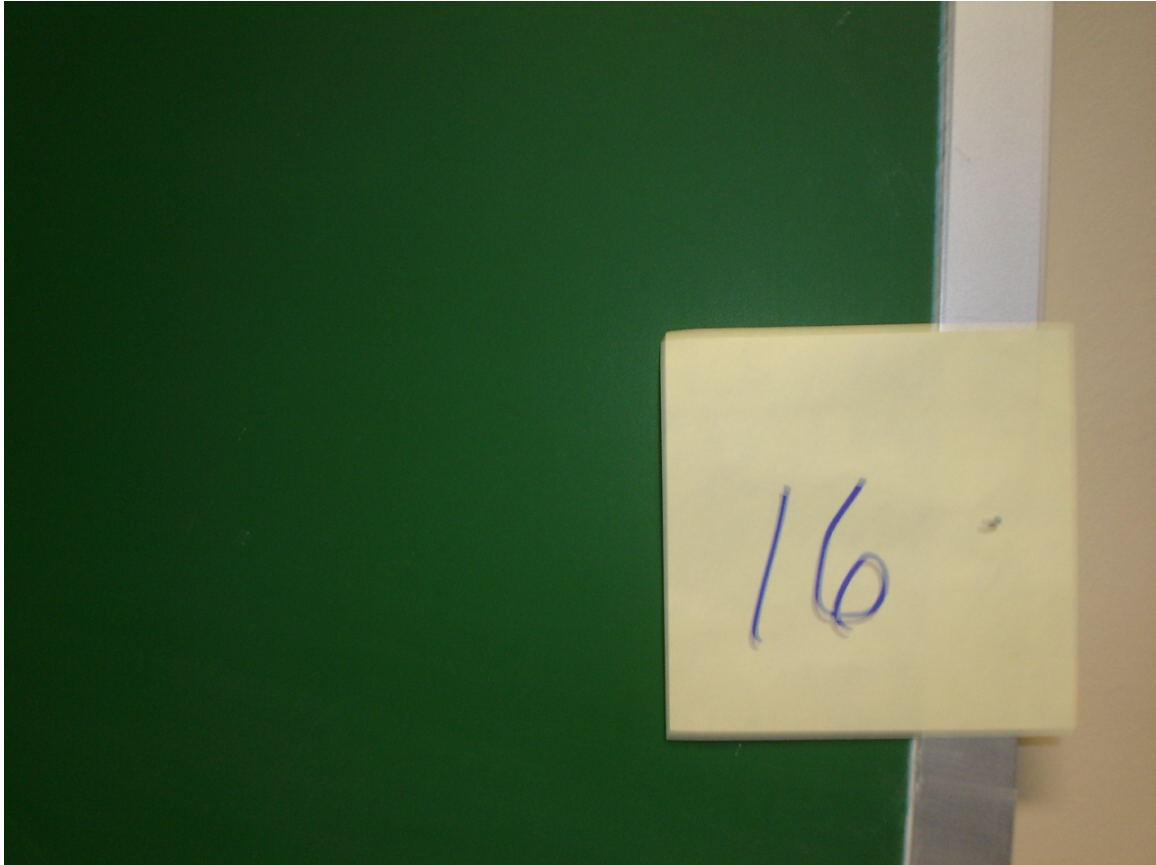
For more information contact MSU Environmental Health and Safety – (517) 353-8956



HA #13 – Non asbestos-containing pyrobar fire block

For more information contact MSU Environmental Health and Safety – (517) 353-8956

Old Horticulture Photo Log



HA #16 – Assumed asbestos-containing green chalkboards

For more information contact MSU Environmental Health and Safety – (517) 353-8956

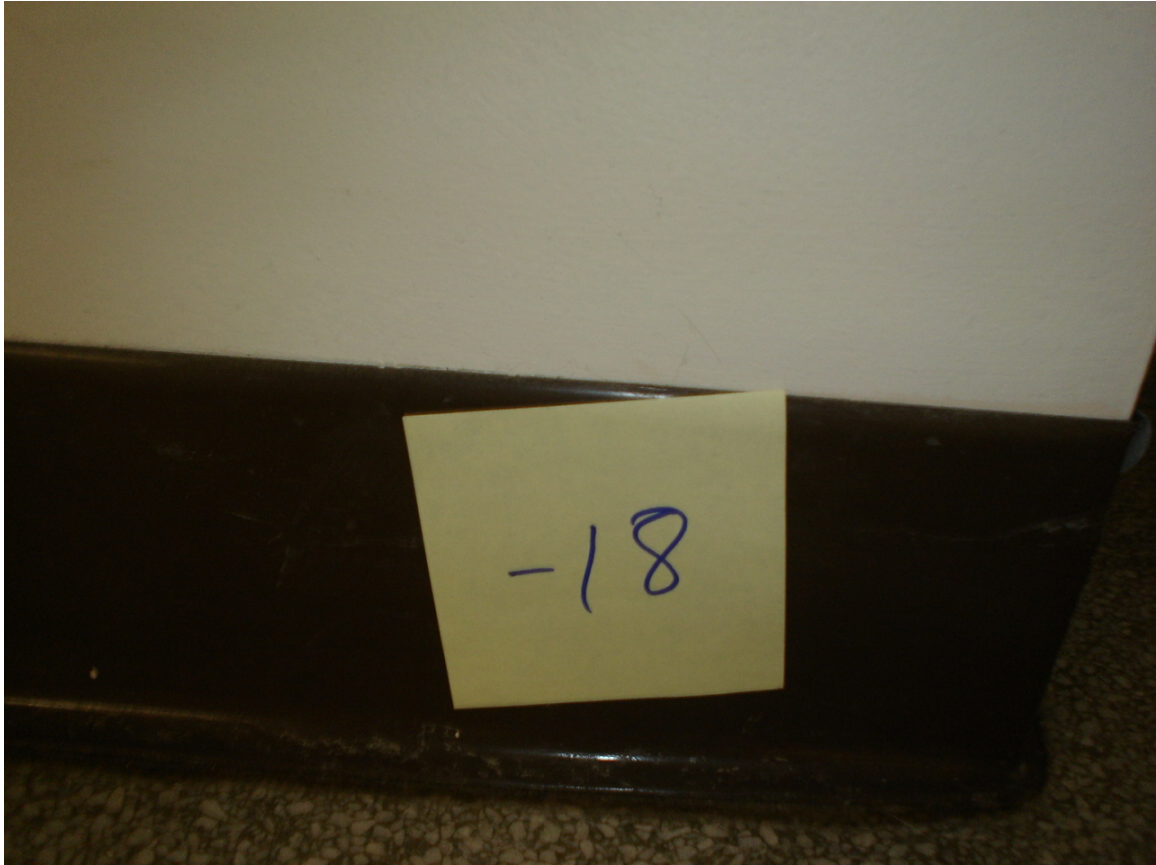
Old Horticulture Photo Log



HA #17 – Non asbestos-containing 12" x 12" white ceiling tile
with pin holes and fissures and associated glue pods

For more information contact MSU Environmental Health and Safety – (517) 353-8956

Old Horticulture Photo Log



HA #18 – Non asbestos-containing 4" brown cove molding
and associated mastic

For more information contact MSU Environmental Health and Safety – (517) 353-8956

Old Horticulture Photo Log



HA #19 – Non asbestos-containing 6" brown cove molding
and associated mastic

For more information contact MSU Environmental Health and Safety – (517) 353-8956

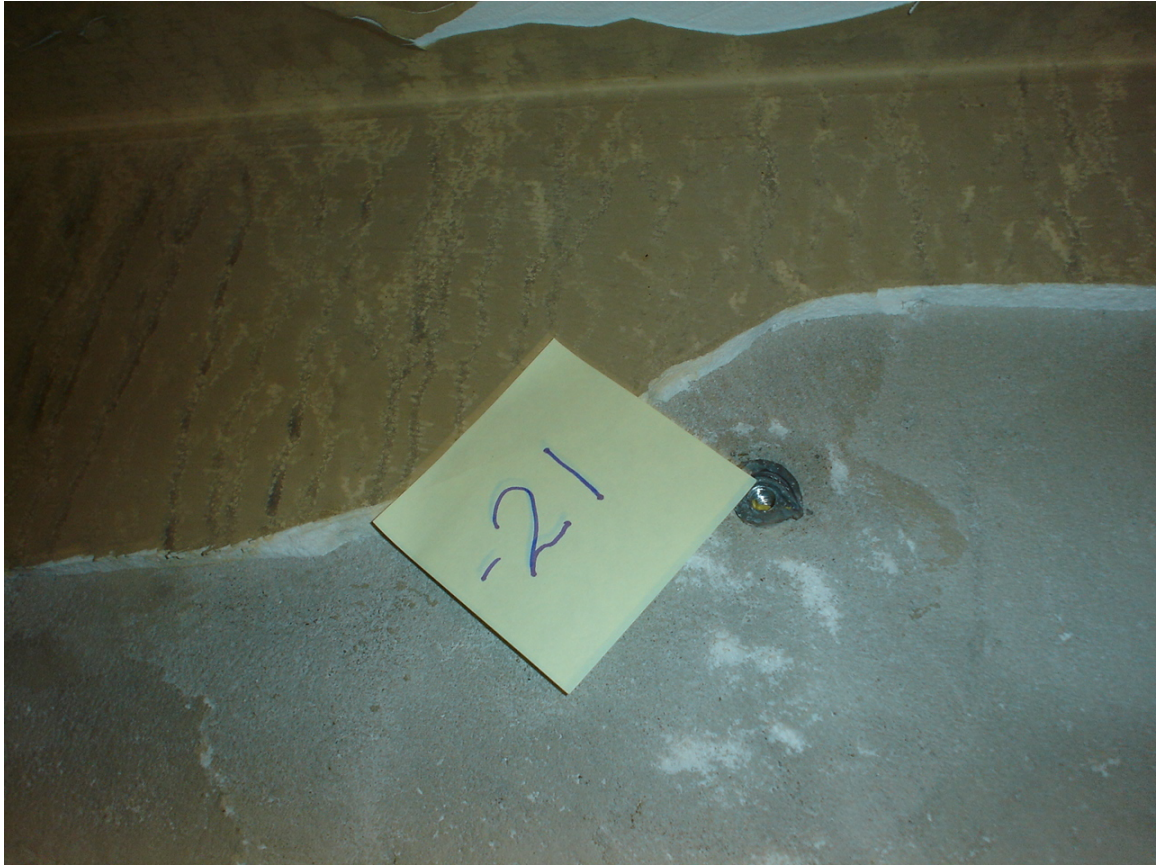
Old Horticulture Photo Log



HA #20 – Non asbestos-containing 4" white cove molding
and associated mastic

For more information contact MSU Environmental Health and Safety – (517) 353-8956

Old Horticulture Photo Log



HA #21 – Non asbestos-containing skim coat plaster over concrete steps

For more information contact MSU Environmental Health and Safety – (517) 353-8956

Old Horticulture Photo Log



HA #22 – Non asbestos-containing 12" x 12" white ceiling tile
with pin holes and associated glue pods

For more information contact MSU Environmental Health and Safety – (517) 353-8956

Old Horticulture Photo Log



HA #23 – Non asbestos-containing gray sink undercoating

For more information contact MSU Environmental Health and Safety – (517) 353-8956