

Michigan State University  
Botany Greenhouse - Asbestos Inspection Photo Log



Botany Greenhouse (#18)

For more information contact MSU Environmental Health and Safety – (517) 353-8956

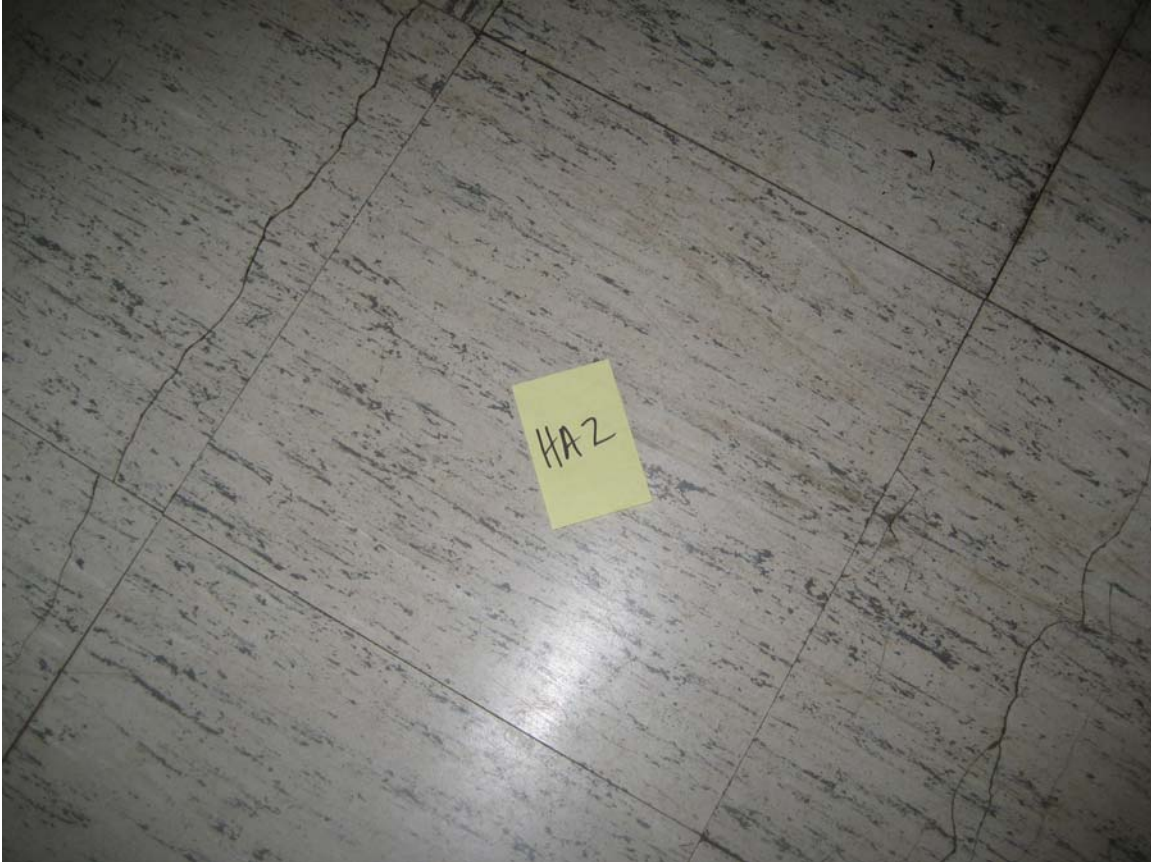
Michigan State University  
Botany Greenhouse - Asbestos Inspection Photo Log



HA #1 – Non asbestos containing 12”x 12” White floor tile with gray and red streaks and associated mastic

For more information contact MSU Environmental Health and Safety – (517) 353-8956

Michigan State University  
Botany Greenhouse - Asbestos Inspection Photo Log



HA #2 – Non asbestos containing 12”x12” Off-white floor tile with gray streaks and associated mastic

For more information contact MSU Environmental Health and Safety – (517) 353-8956

Michigan State University  
Botany Greenhouse - Asbestos Inspection Photo Log



HA #3 – Non asbestos containing 12”x 12” Gray floor tile with dark gray and white streaks and associated mastic

For more information contact MSU Environmental Health and Safety – (517) 353-8956

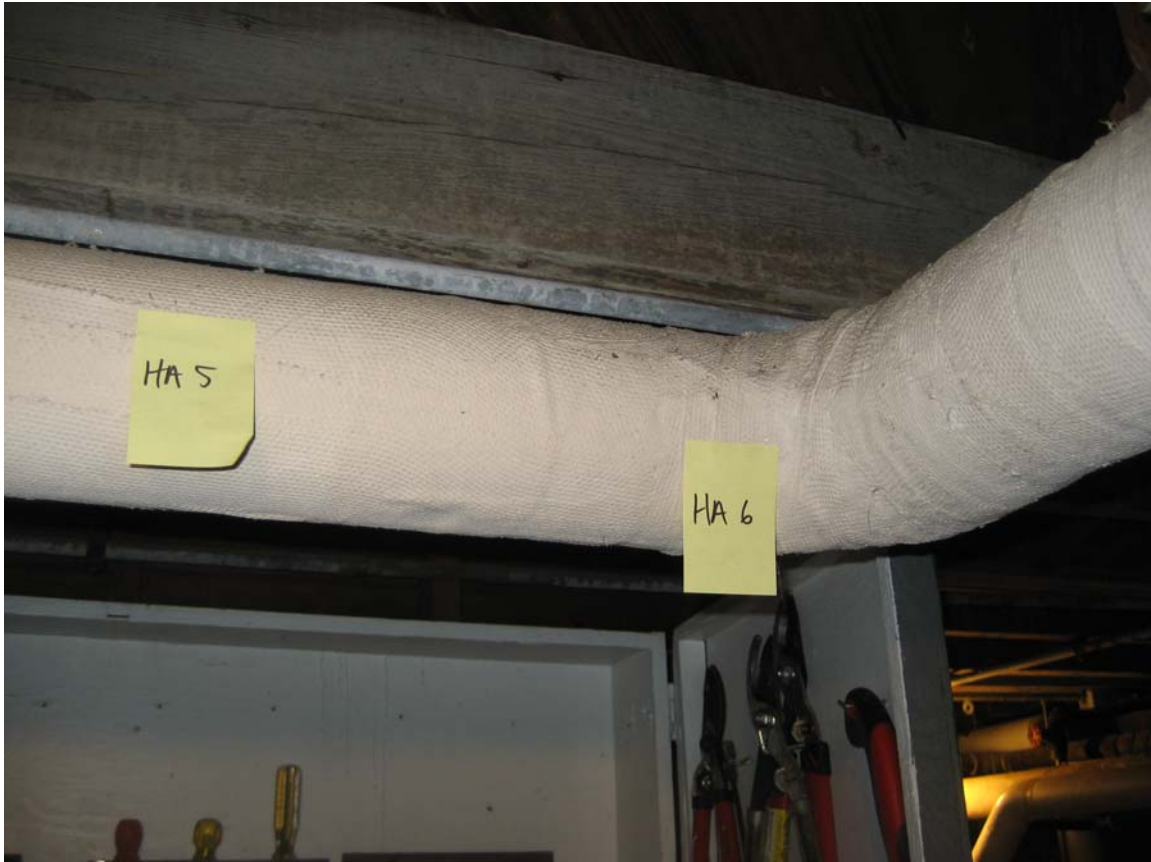
Michigan State University  
Botany Greenhouse - Asbestos Inspection Photo Log



HA #4 – Non asbestos containing white window glazing

For more information contact MSU Environmental Health and Safety – (517) 353-8956

Michigan State University  
Botany Greenhouse - Asbestos Inspection Photo Log



HA #5 – Assumed asbestos containing pipe straight insulation

HA #6 – Assumed asbestos containing pipe fitting and hanger insulation

For more information contact MSU Environmental Health and Safety – (517) 353-8956

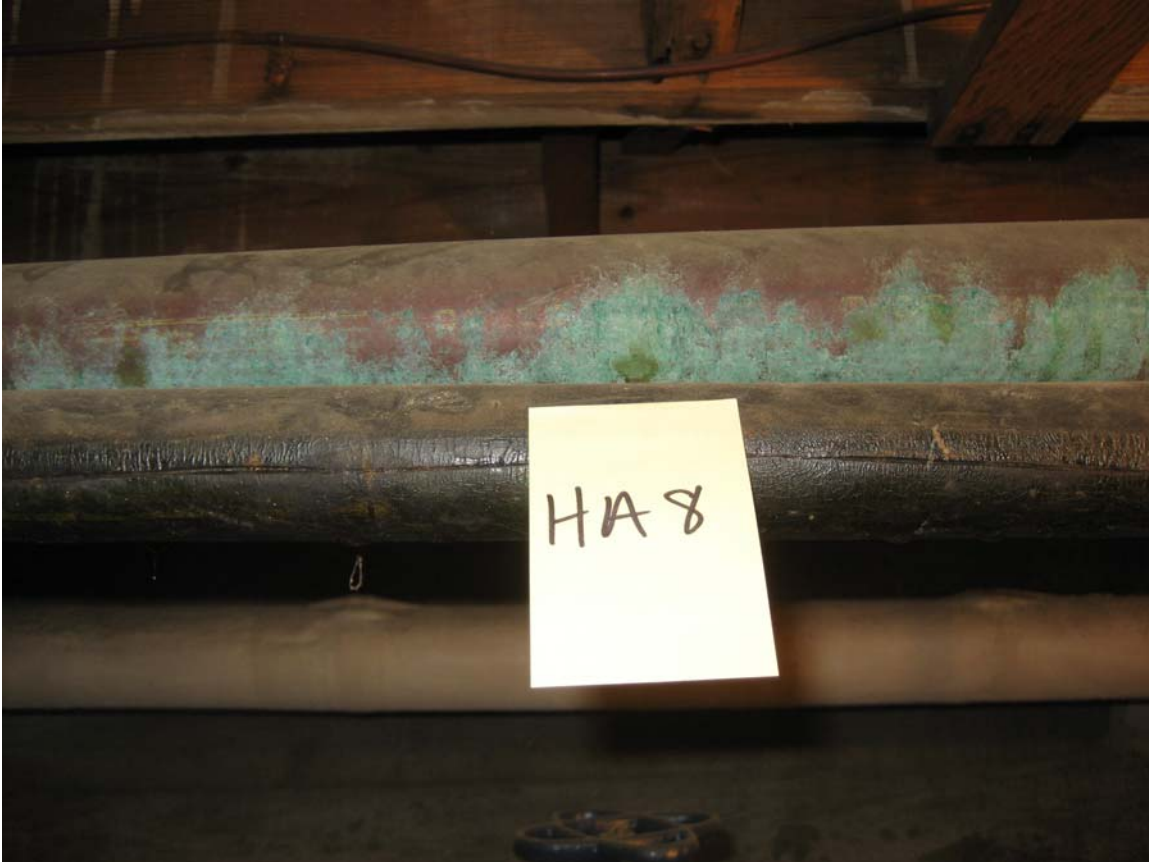
Michigan State University  
Botany Greenhouse - Asbestos Inspection Photo Log



HA #7 – Asbestos containing black and brown pipe wrap

For more information contact MSU Environmental Health and Safety – (517) 353-8956

Michigan State University  
Botany Greenhouse - Asbestos Inspection Photo Log



HA #8 – Non asbestos containing black rubber pipe wrap

For more information contact MSU Environmental Health and Safety – (517) 353-8956



Michigan State University  
Botany Greenhouse - Asbestos Inspection Photo Log



HA #9 – Asbestos containing 2'x 3' ceiling panel

For more information contact MSU Environmental Health and Safety – (517) 353-8956

Michigan State University  
Botany Greenhouse - Asbestos Inspection Photo Log



HA #10 – Asbestos containing gray and white exterior glazing compound,  
1911 house

For more information contact MSU Environmental Health and Safety – (517) 353-8956

Michigan State University  
Botany Greenhouse - Asbestos Inspection Photo Log



HA #11 – Asbestos containing Gray shingles, flashing, and associated mastics

For more information contact MSU Environmental Health and Safety – (517) 353-8956

Michigan State University  
Botany Greenhouse - Asbestos Inspection Photo Log

Not Pictured

HA #12 – Non asbestos containing white exterior caulk

For more information contact MSU Environmental Health and Safety – (517) 353-8956