

Museum Photo Log



Photo 1 – Asbestos-containing 9” x 9” tan floor tile
with multi-colored streaks (associated mastic is non asbestos-containing)

For more information contact MSU Environmental Health and Safety – (517) 353-8956

Museum Photo Log

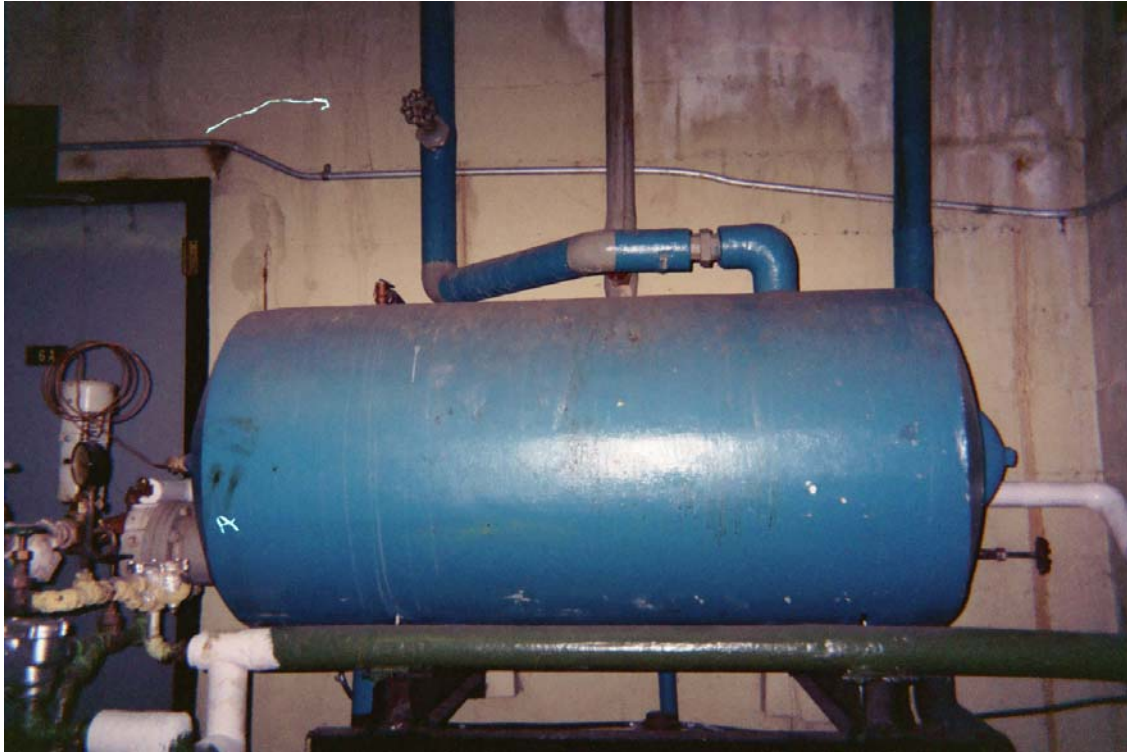


Photo 2 – Asbestos-containing hot water holding tank insulation

For more information contact MSU Environmental Health and Safety – (517) 353-8956

Museum Photo Log



Photo 3 – Asbestos-containing steam/condensate supply and return pipe straight insulation

For more information contact MSU Environmental Health and Safety – (517) 353-8956

Museum Photo Log

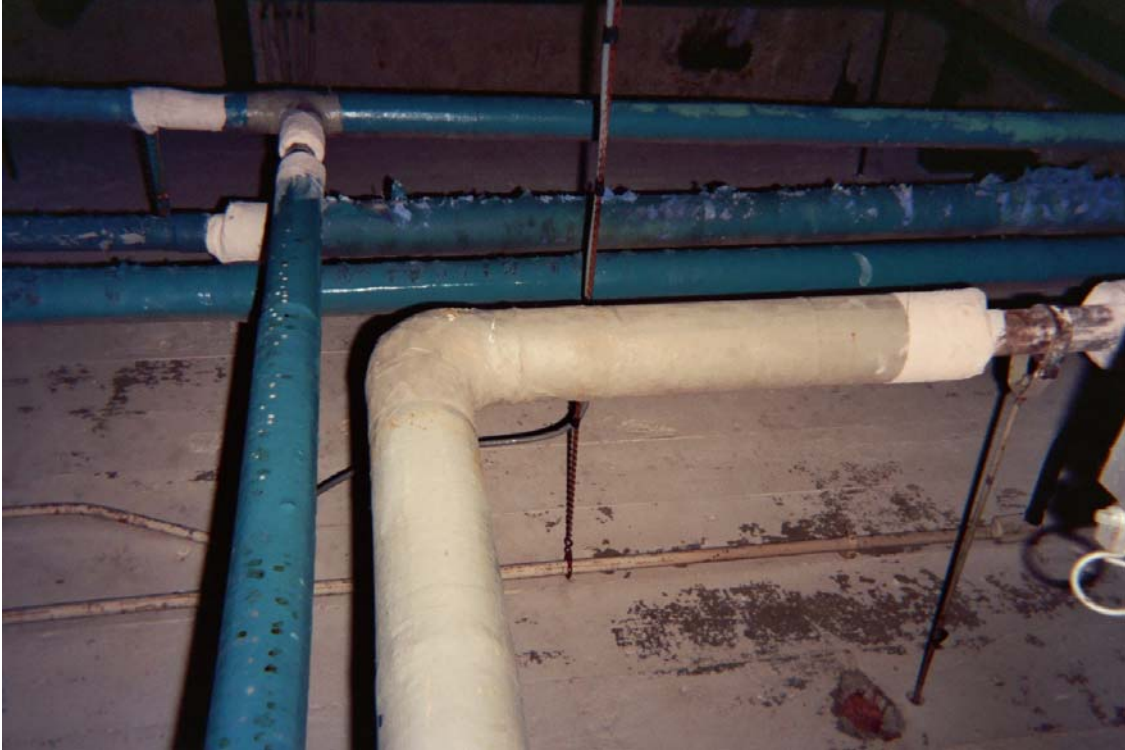


Photo 4 – Asbestos-containing steam/condensate supply and return pipe joint and hanger insulation

For more information contact MSU Environmental Health and Safety – (517) 353-8956

Museum Photo Log



Photo 5 – Asbestos-containing domestic water supply and return pipe joint insulation

For more information contact MSU Environmental Health and Safety – (517) 353-8956

Museum Photo Log



Photo 6 – Non asbestos-containing ventilation duct expansion cloth

For more information contact MSU Environmental Health and Safety – (517) 353-8956

Museum Photo Log

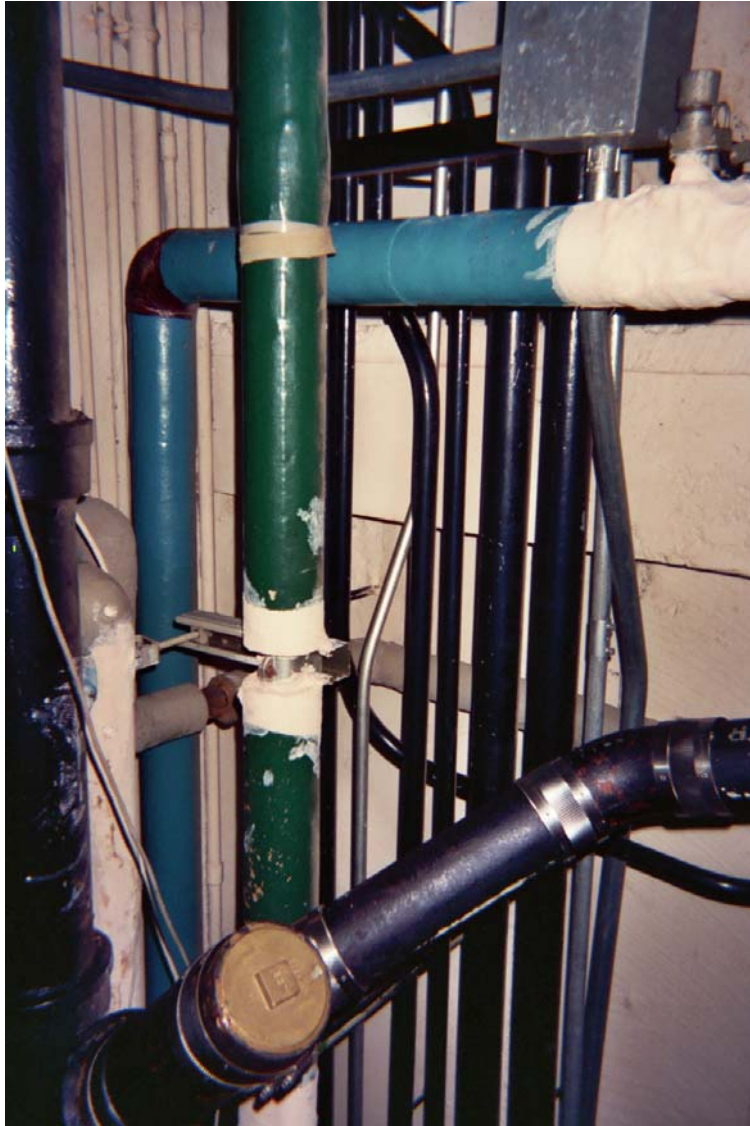


Photo 7 – Asbestos-containing domestic water supply and return pipe straight insulation

For more information contact MSU Environmental Health and Safety – (517) 353-8956

Museum Photo Log



Photo 8 – Non asbestos-containing smooth plaster

For more information contact MSU Environmental Health and Safety – (517) 353-8956

Museum Photo Log



Photo 9 – Non asbestos-containing 12” x 12” white ceiling tile with uniform holes (glue pods are also non asbestos-containing)

For more information contact MSU Environmental Health and Safety – (517) 353-8956

Museum Photo Log



Photo 10 – Non asbestos-containing 12” x 12” cream floor tile with marble pattern, non asbestos-containing 12” x 12” blue floor tile with marble pattern and non asbestos-containing 12” x 12” green floor tile with marble pattern (associated mastics are also non asbestos-containing)

For more information contact MSU Environmental Health and Safety – (517) 353-8956

Museum Photo Log



Photo 11 – Asbestos-containing 9” x 9” light brown floor tile with cream and rust streaks (associated mastic is also asbestos-containing)

For more information contact MSU Environmental Health and Safety – (517) 353-8956

Museum Photo Log



Photo 12 – Asbestos-containing 9” x 9” dark brown floor tile with cream and rust streaks (associated mastic is non asbestos-containing)

For more information contact MSU Environmental Health and Safety – (517) 353-8956

Museum Photo Log



Photo 13 – Asbestos-containing 9” x 9” black floor tile with cream and rust streaks (associated mastic is non asbestos-containing)

For more information contact MSU Environmental Health and Safety – (517) 353-8956

Museum Photo Log



Photo 14 – Non asbestos-containing gray stair tread
(associated mastic is asbestos-containing)

For more information contact MSU Environmental Health and Safety – (517) 353-8956

Museum Photo Log



Photo 15 – Non asbestos-containing brown linoleum floor covering
(associated mastic is also non asbestos-containing)

For more information contact MSU Environmental Health and Safety – (517) 353-8956

Museum Photo Log



Photo 16 – Assumed asbestos-containing fire door and frame

For more information contact MSU Environmental Health and Safety – (517) 353-8956

Museum Photo Log



Photo 17 – Assumed asbestos-containing transite vent hood

For more information contact MSU Environmental Health and Safety – (517) 353-8956

Museum Photo Log



Photo 18 – Non asbestos-containing brown linoleum floor covering
(associated mastic is also non asbestos-containing)

For more information contact MSU Environmental Health and Safety – (517) 353-8956

Museum Photo Log



Photo 19 – Museum building main entrance

For more information contact MSU Environmental Health and Safety – (517) 353-8956